



JULY 2024



THE HIGHLIGHTS

PAGE 2: WORDS FROM THE SHIRE
PRESIDENT

PAGE 3: WORDS FROM THE CEO

PAGE 7: RECYCLING CALENDAR

PAGE 12: PLAYGROUP UPDATE

PICTURED: THE WOODANILLING RECREATION CENTRE AND SPORTING OVAL

SHIRE NOTES

WORDS FROM THE SHIRE PRESIDENT

It was good to see the great turnout to the Meet and Greet at the Pavilion. Even though it was a cool night some braved going outside to stand around a newly constructed fire pit which was expertly put together by Cr Russel Thomson. Thank you Russel, great job. On the night we recognised our retiring Shire Councillors from last year and thanked them for their service to the community, Peter Morrell for 28 years, Tim Brown for 8 years and Stephen Jefferies for 4 years including 2 as President. Russel Thomson was presented with his Certificate for 40 years of Service to Local Government in Western Australia. We also recognised and thanked Kellie Bartley for her just over 2 years of service as the CEO which finished in March this year. Also thanks to all those who filled out the Strategic Community Plan survey, this helps give Council direction for the future. Thank you to all involved in putting the evening together and for contributing on the night. Another Community Social Function is planned for later in the year.

The Shire continues to support the 'Keep the Sheep' movement with a delegation heading over to Canberra representing seven shires in the Great Southern including Woodanilling. The delegation will lobby politicians to change their minds on the Live Sheep Export Ban Bill and also to gather support for a Senate inquiry into the ban. Whilst the Ban was still pushed through the Senate and passed, we will continue lobbying for our Livestock Industry and our communities.

On behalf of the Shire and Community, I would like to recognise the efforts of the Shire staff in all the work they have achieved particularly in the last few weeks to complete projects that needed to be completed by the end of the financial year, Well Done!

Keep warm and remember the days are slowly getting longer.

Cr Dale Douglas
Shire President



WORDS FROM THE CHIEF EXECUTIVE OFFICER

July has come and with it starts a new financial year.

June was a month of great achievements for our team as we finished a number of projects including installing a new footpath in town, sealing sections of Robinson Road West and Youngs Road, conducting emergency safety works on Oxley Road and pushing gravel for a number of our roads. I want to thank our Infrastructure team for working overtime at the end of June to ensure we got our projects finished by 30 June 2024 for the Local Roads and Community Infrastructure Program Phase 2 & 3 Grants provided by the Australian Government. We also celebrated a number of former councillors and staff at the Woodanilling Community Meet and Greet event which saw over 85 of the community come together for a great evening.

This is typically a busy planning period for local government as we look to finalise our end of year accounts and set a budget for the next 12 months. The focus for the Shire over the next 12 months will be on delivering our core services whilst supporting activation in town through the next phase of the Local Roads and Community Infrastructure Program Phase 4 Grants.

We are also busy planning this years Bloom Festival event which will be held from Friday 20th to Thursday 26th September. If you are a budding artist in Woody and want to get involved, please make contact with the Shire to register your interest.

With the wet and windy weather opening up holes on our roads and pushing trees over, it is important that all maintenance requests come through to the office. This ensures we can record these in our system for actioning.

Have a wonderful July.

Mr Paul Hanlon
Chief Executive Officer



SHIRE NOTES



ARE YOUR CHIMNEYS CLEAN?

Each winter firefighters attend many house fires due to ash, soot and combustion residue that has built up inside your chimney flue. In high risk cases this residue can ignite causing a fire. In most cases you will hear loud roaring noise and see fire shooting out of your chimney. House fires can cause extensive property loss and damage, most of these are accidental and preventable.

Fires can start from:

- Embers escaping through cracks in damaged brick or metal work
- A build-up of soot and flammable material from previous winters.

All fireplaces should:

- Meet approved standards
- Be installed and maintained by a reputable business or tradesperson

When using your fireplace, it is important to:

- Avoid using combustible liquids to light open fires – use firelighters instead.
- Keep all items at least one metre away from the fireplace.
- Always use a fire screen in front of open fireplaces.
- Never leave children near the fireplace unsupervised.
- Extinguish all flames and embers completely before leaving the room.
- When disposing of ash, ensure it is completely cool and no embers remain.

Stay safe this winter and keep warm. For further information visit www.dfes.wa.gov.au – we also recommend downloading the Home Heating Safety factsheet.



SHIRE NOTES

STORM PREPAREDNESS

With the weather getting wetter and colder, it's a good time to make sure your home is prepped for storms. Here's a helpful guide to understanding wind terminology.

There are a handful of helpful and preventative steps from the Department of Fire and Emergency Services (DFES) that can help keep your family safe and minimise damage to your home.

For information on storm preparedness

visit this link : www.dfes.wa.gov.au/storm - and stay safe this Winter.

FALLEN TREE? KNOW WHO TO CALL:

Fallen tree or branches that have damaged your home or vehicle, making it unsafe:

SES
☎ 132 500

Fallen tree or branches over your fence or in your yard:

Private Tree Removal Company

Fallen tree or branches across a minor street or road:

Local Government

Fallen tree across a major road or highway:

Main Roads WA
☎ 138 138

For more storm safety information visit: dfes.wa.gov.au/storm



SHIRE NOTES

RECYCLING CALENDAR

July							August							September						
S	M	T	W	T	F	S	S	M	T	W	T	F	S	S	M	T	W	T	F	S
	1	2	3	4	5	6					1	2	3	1	2	3	4	5	6	7
7	8	9	10	11	12	13	4	5	6	7	8	9	10	8	9	10	11	12	13	14
14	15	16	17	18	19	20	11	12	13	14	15	16	17	15	16	17	18	19	20	21
21	22	23	24	25	26	27	18	19	20	21	22	23	24	22	23	24	25	26	27	28
28	29	30	31				25	26	27	28	29	30	31	29	30					

October							November							December						
S	M	T	W	T	F	S	S	M	T	W	T	F	S	S	M	T	W	T	F	S
		1	2	3	4	5						1	2	1	2	3	4	5	6	7
6	7	8	9	10	11	12	3	4	5	6	7	8	9	8	9	10	11	12	13	14
13	14	15	16	17	18	19	10	11	12	13	14	15	16	15	16	17	18	19	20	21
20	21	22	23	24	25	26	17	18	19	20	21	22	23	22	23	24	25	26	27	
27	28	29	30	31			24	25	26	27	28	29	30							

What can be recycled?

Glass jars & bottles

Rinsed. Lids removed. No table glassware (e.g. drink glasses)

Cans & foil products

Aluminium & steel food & beverage cans, aluminium & foil products. Rinse cans & wipe foil. Attached lids are ok.

All milk and juice cartons

Rinsed. No silver lined UHT cartons.

Plastic bottles, containers & lids

Rinsed. Soft drink, milk & detergent bottles with recycling symbols 1, 2, 3 or 5.

Mixed paper

Newspapers, cereal boxes, frozen food boxes, office paper, junk mail, shredded paper, magazines & phone books

NO plastic wrap or bags, disposable coffee cups, Styrofoam, polystyrene, batteries, nappies, garden waste, food scraps, paint tins, clothing, building rubble or kitty litter.

COMMUNITY



WAGIN / WOODANILLING LANDCARE ZONE

Tree Seedlings



We have had a few enquiries into where we can purchase seedlings now that our closest local nurseries have shut down.

We used to have access to one in Katanning and one in Tincurrin, however they are no longer operational at this point.

If you are looking to purchase seedlings this year there are several nurseries we can recommend, however they are all a bit of a distance away and you may be required to travel to pick up unless you have a substantial order.

These two are very good for wheatbelt saline condition species.

Chatfields Tree Nursery—anameeka saltbush supplier

695 Barrack Rd Tammin

info@chatfields.com.au—0427371075

Westgrow Farm Tree Nursery

Lot 102 Quellington Rd Meckering

westgrowft@outlook.com—0428739477

If you are looking for more diverse range of the flowering species found across the south west.

Boyanup Botanical

Lot 14 South Western Hwy Boyanup

9731 5470

Email: wwlandcare@westnet.com.au | Phone: 9861 2222 | Mob: 0428 231 506



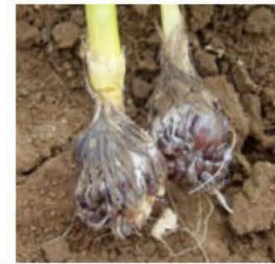
WAGIN / WOODANILLING LANDCARE ZONE

Cape Tulip Time



Just a reminder to keep an eye out for emerging cape tulip and plan your control program. You will want to undertake your control action before they flower, which is usually August/September, so now is the time to begin to assess the corm development to determine time to spray.

To prevent the plant from withstanding the spray program, you need to determine when the old corm is dying off, but the plant has not yet flowered, so this may involve digging up to check over the course of a few weeks, until you find the new corm growth occurring and the old corm dying back... this is the time to spray. If you spray too early, you will only impact the old corm, which was dying off regardless, and the new corm will still develop to flower and drop seed.



The seed life for this plant is very short, only 2 years in general, so it is one that can be eradicated with an organised control program with a very short period of time in relation to most weeds. The main ongoing issue would be from neighbouring parcels of land that are still infested spreading the seed, so it's worth speaking to your neighbours if the problem is widespread.

For treatment you can use the following:

0.2g (600g/kg) metsulfuron in 10L water plus 25ml Pulse (penetrant)
100ml glyphosate in 10L water plus 25ml Pulse

Cultivation a few weeks after spraying may improve control

For more details, contact Gen at the office.

Email: wlandcare@westnet.com.au | Phone: 9861 2222 | Mob: 0428 231 506

COMMUNITY

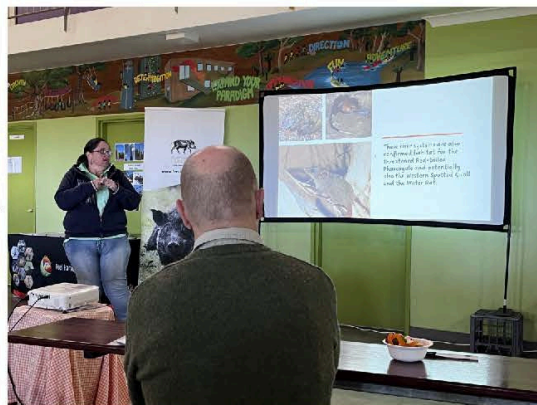


WAGIN / WOODANILLING LANDCARE ZONE

South West Feral Pig Forum

Gen was invited to speak at the South West Feral Pig Forum which was held by Peel Harvey Biosecurity Group.

They asked to hear about the current project we have running, how the program was developed, how its rolling out and plans for the future.



It was interesting as always at these kind of events to speak to other professionals doing work in the same field. Always good to find out about new methods such as this trap system known as a pig brig....



Much more portable than the traditional solid panel type trap, relying on the netting structure to prevent the pigs from escaping. This system like any trap, does require a bit of pre-feeding to get the pigs comfortable with the set up, and as you can imagine, it is critical to get the right kind of footing for the pickets, as they are what maintains the structure, but as you can see, it is much easier to move when needed, and according to those at the forum, once you are familiar with it, only takes about an hour to erect.

Our contractor is happy to upskill landholders and staff if you want to improve your pig management on property. Now is your chance to get this training at no charge. Contact Gen if you are keen.

Email: wwlandcare@westnet.com.au | Phone: 9861 2222 | Mob: 0428 231 506

COMMUNITY



WAGIN / WOODANILLING LANDCARE ZONE



Do you have our cat trap?

We had a cat trap removed from the rear of the Shire office and do not know where it went. We are happy to hire it out, but we do need to be able to get it back.



Contact Gen at the WWLZ office or the Shire to let us know and we can log you as the current hirer. No penalties or charges involved.

Phone 0428 231 506 or email: wwlandcare@westnet.com.au

Email: wwlandcare@westnet.com.au | Phone: 9861 2222 | Mob: 0428 231 506

COMMUNITY

WOODANILLING PLAYGROUP

Over the past term our families have been busy making memories through messy play, painting, story time, nature walks and play. Playgroup meet weekly alternating between Woody primary school, CWA and pavilion. Over the school holidays we take a break and will recommence on Thursday 18th July at CWA cottage. Special mention to Pauline and the CWA ladies for offering our families a warm friendly space to meet. Keep an eye out on our Facebook page for updates. If you would like further info please contact Kahlia 0439 754 391.



WOODANILLING PRIMARY SCHOOL

The Woodanilling Primary School Newsletter is now being introduced on Sway! To View simply double click the photo if you're accessing the Wongi via phone or computer or copy the link below to be directed to it via your web browser.

<https://sway.cloud.microsoft/3UWRLwatIDfDmFTt?ref=Link>



COMMUNITY

WOODANILLING CWA

Well, Woody did itself proud on Saturday July 6th!! Despite freezing cold conditions, people turned out for the Market Day in the CWA grounds. With a dash of sunshine the spectacle would have been gorgeous but the music overcame some of the wintry blues. The floral art tribute (courtesy of the talented Colette Annice) to our 90th Birthday was on display and made headlines!!! Pauline's head that is!!!! Our cakes, raffle and donations made us enough money to comfortably fund the replacement of the last three windows in our cottage. So a successful morning. Thanks to all who made it possible. Once again, well done Woody!

Our meetings are always scheduled for the third Monday of the month so see you there! AND any man wishing to come along, you are welcome too after the motion was passed at the recent Conference.



SHORT MAT BOWLS

Our run of disappointing numbers on Monday afternoons has continued but we soldier on with a Pairs competition and Jack Club where you play for individual glory! New members welcome - young or old - it's all in good fun and provides a social outlet on a dreary afternoon. 2.00 p.m. on a Monday at the Recreation Centre.



COMMUNITY

WOODANILLING HOCKEY CLUB

MENS B GRADE	
Woodanilling	25
Williams	22
Olympics	18
Warriors	15
Riffs	14
All Blacks	10
Dumbleyung	9
Pingelly	6
Wagin	1

J11	
Dingoes	21
Devils	18
Wickepin	14
Stingrays	13
Woodanilling	12
Brookton	12
Williams Blue	7
Williams White	6
Lakers	0

MIDDLE SCHOOL	
Lions	15
Leopards	12
Cougars	7
Tigers	6
Panthers	5
Pumas	4
Woodanilling	2

WOMENS B GRADE	
All Blacks	10
Pingelly	7
Woodanilling	6
Robins	6
Wickipin	4
Warriors	1

J7	
Lakers	8
Williams	8
Woodanilling	8
Dingoes	8
Stingrays	8
Devils	8



FIXTURES	
AWAY GAMES	HOME GAMES
Narrogin Thursday 18th July Middle School at 4.45pm	Saturday 20th July Men's B Grade at 1.30pm
Narrogin Saturday 20th July J7 at 9.45am	Saturday 20th July Women's B Grade at 3.00pm
Narrogin Thursday 25th July Middle School at 4.45pm	Saturday 27th July Men's B Grade at 3.00pm
Narrogin Thursday 1st August Middle School at 6.00pm	Saturday 27th July Women's B Grade at 1.00pm
Narrogin Thursday 8th August Middle School at 4.45pm	Sunday 28th July Men's B Grade at 1.30pm
Dumbleyung Saturday 10th August Men's B's at 1.30pm	Saturday 3rd August Men's B Grade at 3.00pm
Narrogin Thursday 15th August Middle School at 6.00pm	Saturday 3rd August Women's B Grade at 1.30pm
	Saturday 10th August Women's B Grade at 1.30pm
	Saturday 17th August Men's B Grade at 1.30pm
	Saturday 17th August Women's B Grade at 3.00pm

COMMUNITY

WOODANILLING HOCKEY CLUB

WOODANILLING HOCKEY CLUB PRESENTS

Christmas in July

SATURDAY **20th** FROM 6PM

Woodanilling Pavilion

ALL WELCOME

Adults \$25/pp
Children \$15/pp

Please RSVP by July 12th to
woodanillinghockeyclub@hotmail.com
or see Leanne at the Woody Post Office

President: Trevor Parminter

Secretary: Taran Becker

Treasurer: Morgan Doak

Coaches

Women's: Sally Vermeulen

Men's: Graham Treloar

Middle school: Penny Shackley

J11: Penny Shackley

J7: Pip Treloar

Training Schedule:

- Juniors: Monday at 3:30 PM,
Wednesday at 4:30 PM
 - Women: Tuesday at 6:00 PM
 - Men: Wednesday at 7:00 PM
- Each session lasts between 1 to 2 hours.



COMMUNITY

JUSTICE OF THE PEACE

Did you know that we have 4 JP's in Woodanilling.

Ray Baxter - 9823 1546

Russel Thomson- 0419 950 217

Peter Bartholomeusz- 0447 771 511



SUPPORT OUR LOCAL WOODANILLING BUSINESS



THE WOODY SHOP

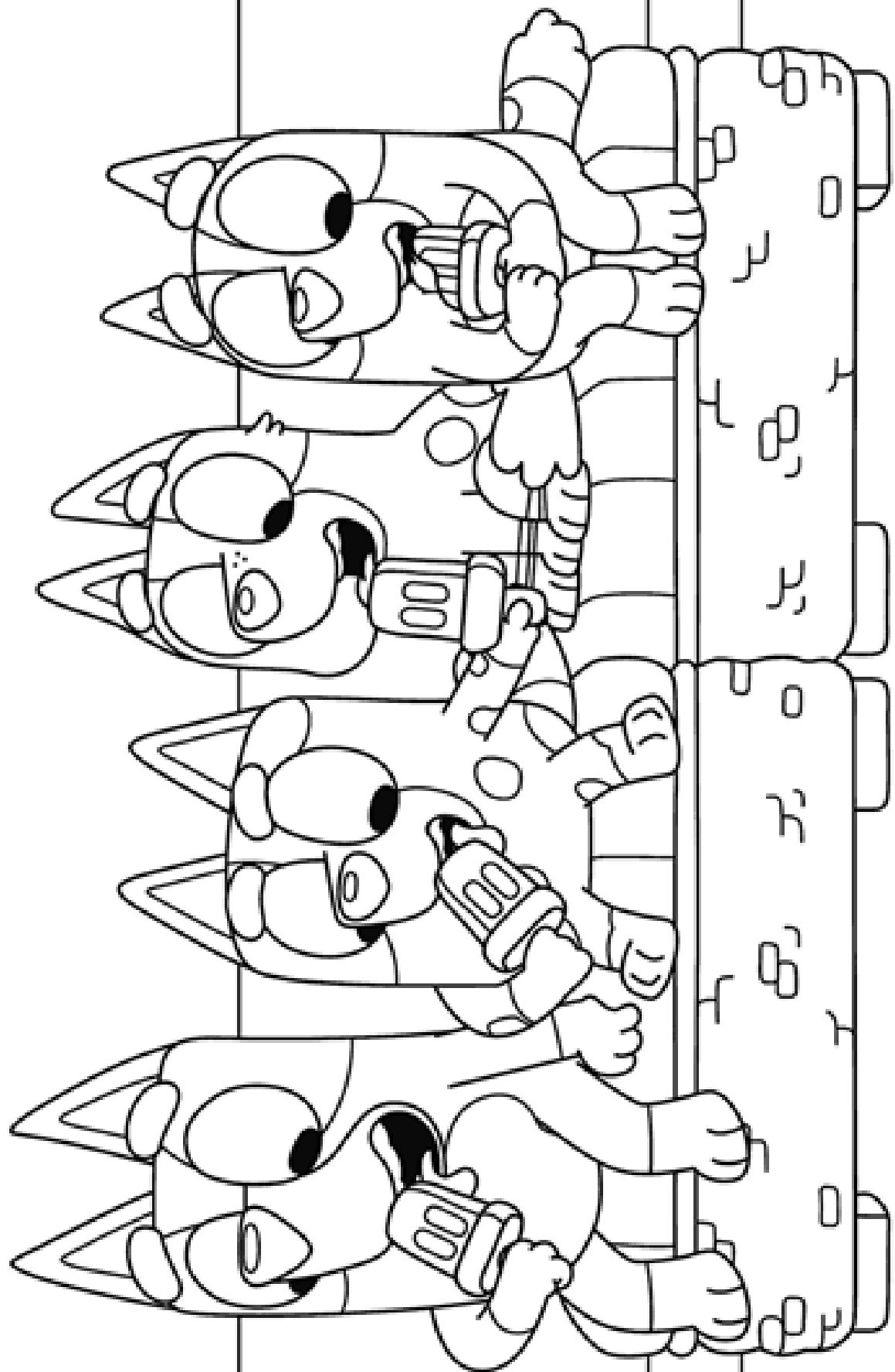
Opening Hours

Monday	8:00 am - 5:00 pm
Tuesday	8:00 am - 5:00 pm
Wednesday	8:00 am - 5:00 pm
Thursday	8:00 am - 5:00 pm
Friday	8:00 am - 5:00 pm
Saturday	9:00 am - 12:00 pm
Sunday	Closed

SHIRE EVENT CALENDAR

16th July

Ordinary Council Meeting to be held 4pm in Council Chambers



Colouring In Competition- Submit your entry to the Shire Office or email shire@woodanilling.wa.gov.au
We love to feature all children's drawings so please feel free.
Please submit your name, age & contact details with your entry.

RECIPES

LEMON GARLIC ROAST LAMB

INGREDIENTS

1.5-1.75kg leg of lamb
salt and cracked black pepper
olive oil
12 sprigs rosemary
3 lemons, halved
3 garlic heads, halved
roasted vegetables, to serve



Step 1

Preheat oven to 200°C. Score the lamb at 2cm intervals and rub with salt, pepper and olive oil.

Step 2

Scatter the rosemary in a pile in the centre of a baking dish, along with lemon and garlic. Top with the lamb. Fill the baking dish with enough water to come 1cm up from the base of the dish.

Step 3

Place the lamb in the oven. For cooking time allow 30 minutes per 500g. Cover the lamb with foil after 20 minutes to avoid it becoming too brown, then uncover for the final 20 minutes of cooking. Top up the water a little as the lamb cooks to avoid the lamb drying out.

Step 4

Once the lamb is cooked through, or to your liking, remove from oven, cover and rest for 15 minutes. Slice and serve with roasted vegetables.



Step 1

Preheat oven to 200C/180C fan-forced. Grease a large baking tray with sides. Line tray with baking paper.

Step 2

Drain apricots, reserving 1/3 cup juice. Remove leaves from 1 rosemary sprig. Finely chop. Place soup mix, chopped rosemary, oil and reserved juice in a jug. Stir until well combined. Arrange chicken, apricots, potato and onion, in a single layer, on prepared tray. Drizzle over soup mixture. Season with salt and pepper.

Step 3

Bake, turning chicken and adding remaining rosemary sprigs halfway, for 45 minutes or until chicken is cooked through and potato is tender. Serve.

APRICORT CHICKEN

INGREDIENTS

695g tub apricot halves in juice
4 sprigs fresh rosemary
2 tbsp French onion soup mix
1 tbsp extra virgin olive oil
1kg Chicken Drumsticks
500g baby potatoes, halved
1 red onion, cut into thin wedges

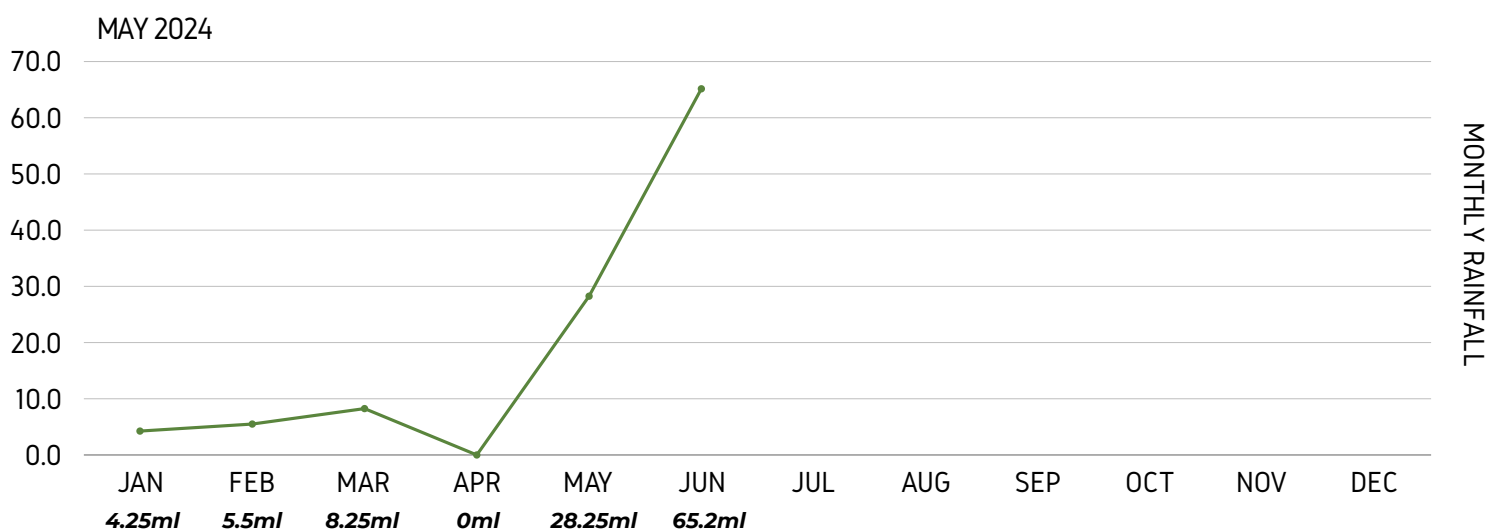
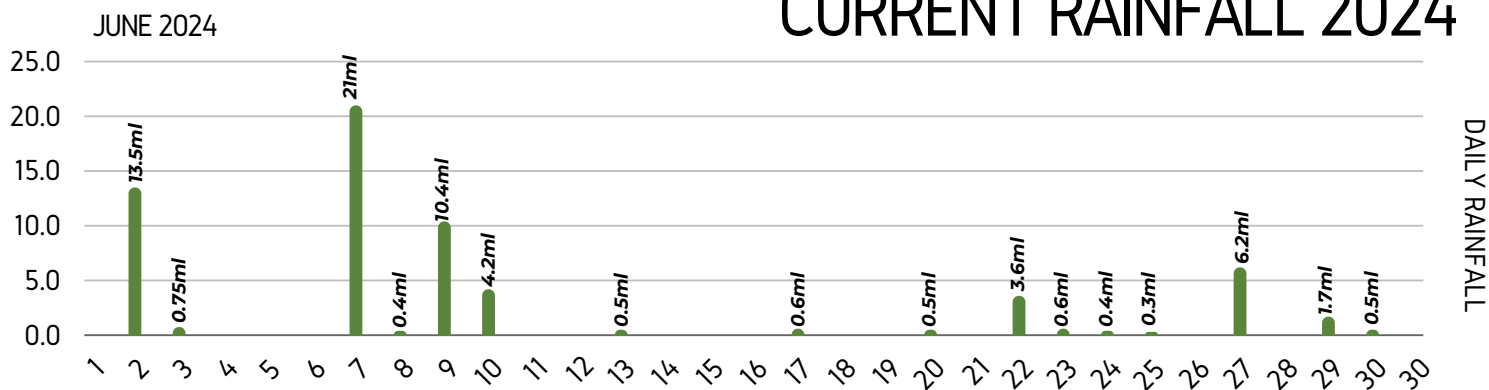


COMMUNITY

JULY BIRTHDAYS

1st Judy Scott	10th Taylor Bolt	18th Ethan Wilhem
2nd Ceanne Mader	10th Quona Elliot	20th Naomi Koster
2nd Peter Eckersley	10th Russell Thomson	21st Haden Baker
3rd Sebastian Crossley	13th Annabel Paulley	27th Roger Crosby
3rd Jakob Shackley	13th Danielle Wilhelm	31st Rebecca Crosby
3rd Brenda Shackley	16th Julia Douglas	31st Kirsty Douglas
6th Jason Cronin	17th Tayla Baxter	31st Kim Wilhelm
9th Corrie Davidson	17th Ashleigh Baxter	

CURRENT RAINFALL 2024



Source: This information is provided by a local resident at their own property. This data is not intended to be part of an official record. All parties should conduct their own due diligence before relying on this information.



Contact your local Area Manager, Chloe Turner

0447 469 245 cturner@summitfertz.com.au

Shires of Boyup Brook, Katanning, Kojonup, Wagin and Woodanilling.

www.summitfertz.com.au

Peter Rundle MLA

Member for Roe



Narrogin Office
83 Federal Street
Narrogin WA 6312

Ph: 9881 1225

Esperance Office Ph: 9071 6555
107 Dempster Street
Esperance WA 6450

**DEPUTY LEADER OF
THE NATIONALS WA**

www.peterrundle.com.au

 PeterRundleRoe

E: peter.rundle@mp.wa.gov.au

Agricultural Dealership



TOTAL AG
CENTRE

Family owned Dealership with over 15 years industry experience, we are well placed to service and support a wide range of agricultural machinery, from small fixed plant to large modern broad acre equipment.



KIOTI TRACTORS

- ✓ Tractor and implement sales
- ✓ Service and parts support



BAD BOY MOWERS

- ✓ Mower Sales
- ✓ Service and parts support



BROOKFIELD AGRICULTURAL PRODUCTS

- ✓ Machinery sales
- ✓ Service and parts support

Conveniently located at 152 Beaufort Street, Katanning.
Call in to say hi and view our range.



0459 977 449

Damien Stephens



www.totalagcentre.com.au



Totalagcentre@outlook.com

WONGI CONTRIBUTORS

All contributions are to be sent to the new Wongi email or to the volunteers listed below; or may be left at the Woodanilling Store in a box provided or handed into the Shire office. Any queries, comments or complaints are to be directed to the Wongi Volunteer.

WONGI CONTACT

For any inquiries, please contact Ciara Whitmore at 3316 Robinson Rd, Woodanilling WA 6316, or by phone at 9823 1506.



NEW IDEAS ENCOURAGED!!

We would love to see new suggestions and ideas for the Wongi.

By chance do you know someone with upcoming births, marriages, milestones, new locals to have their birthdays added or ad put into the Wongi. Any comments in passing, interesting activities happening in Woody?

Email- shire@woodanilling.wa.gov.au with your comments, suggestions and updates

All contributions are to be sent to the new Wongi email or to the volunteers listed below; or may be left at the Woodanilling Store in a box provided or handed into the Shire office. Any queries, comments or complaints are to be directed to the Wongi Volunteer.

ADVERTISING RATES 2024/2025

For black & white A4 advertisements per month:

Full page: \$66.00 - Half page: \$33.00 - 1/4 page: \$16.50 - Business card: \$8.25

To advertise in the Wongi, email: shire@woodanilling.wa.gov.au

DISCLAIMER

Due to the Trade Practices Act 1974, this publication accepts no responsibility for the accuracy or reliability of the contributors or advertisers. The publisher reserves the right to refuse matter considered unsuitable. The opinions expressed are not necessarily those of the Shire of Woodanilling or the Wongi volunteers.

IF UNCLAIMED

PLEASE RETURN TO

PO BOX 99

WOODANILLING WA 6316