



WOODANILLING PRIMARY SCHOOL 26th  
April

## What's in this Issue



- Important Dates
- Principal's Address
- From the Classroom
- School News
- Woodanilling Primary School Council
- Woodanilling Primary School P&C
- School Nurse
- Community New



## Important Dates



- **Term 2 2024**
  - Friday 10th May - Walk Safely to School

## Djeran— Autumn (season of adulthood) April - May



Djeran season at last sees a break in the really hot weather. A key indicator of the change of season is the cool nights that once again bring a dewy presence for us to discover in the early mornings.

The winds have also changed, especially in their intensity, with light breezes being the go and generally swinging from southerly directions (i.e. southeast to southwest). Many flying ants can be seen cruising around in the light winds.

Djeran is a time of red flowers especially from the Red flowering gum (*Corimbia ficifolia*), as well as the smaller and more petite flowers of the Summer Flame (*Beaufortia aestiva*). As you travel around the Perth area, you may also notice the red 'rust' and seed cones forming on the male and female Sheoaks (*Allocasuarina fraseriana*). Banksias start to display their flowers, ensuring that there are nectar food sources for the many small mammals and birds that rely upon them.

Traditionally, foods at this time of year included the seeds that had been collected and stored for treatment from the Zamia last season along with the root bulbs of the Yanget (Bullrushes), fresh water fish, frogs and turtles.

As the season progresses, the nights will become cooler and damper along with some cool and rainy days which also means that traditionally mia mias (houses or shelters) were now repaired and updated to make sure they were waterproofed and facing in the right direction in readiness for the deep wintery months to come.

Bureau of Meteorology

## Principal's Address



Dear parents, carers and community members

Everyone has had a great start to Term 2 with the classroom buzzing with activity. I am very much enjoying being part of the Woodanilling PS community and would like to thank the staff, students and parents I have met so far for making me feel welcome. I look forward to working with everybody this term while the process is run to select your permanent principal, who will start in Term 3.

### School Arrival Time

Thank you to those who have been delivering their children to school **from 8:40am**. The time prior to this is when the staff are preparing for and ensuring they have all resources ready for the day's activities, so your assistance in this is much appreciated.

### Staffing

This term we welcome Mrs Anita Earnshaw who will be teaching Italian, Science, HASS and Sport to the year 1-4 students on a Friday. The students all enjoyed working with her last week and we look forward to seeing her each Friday for this term only.

Ms Sonja Hannan has now started her leave and we would also like to welcome our new EAs Miss Micaela and Ms Narelle Barr. Micaela will be here for this term and Narelle has won a permanent appointment to the staff as our Special Needs Education Assistant.

### **ANZAC Assembly**

Thank you to the students and staff for organising a fabulous ANZAC Assembly and thank you very much to the parents and Police who attended.

### **P&C**

This week I attended the AGM of our P&C association. Congratulations to all office bearers who were re-elected and thank you very much to them for the time they put in to supporting our school. If you are interested in joining the P&C, please contact the president, Danielle Perrie.

### **Athletics Carnival**

This term we would usually be participating in the annual sports carnival with Broomehill Primary School. This year, however, we are unable to join them as they are organising the interschool carnival, and are not holding a school carnival.

Instead, we are going to hold a tabloid sports morning in term 3, to which parents will be invited to participate, the staff will join in, and it will be a fun morning of games. Parents and families will also be invited to bring along a picnic lunch to enjoy following the activities. Staff will finalise a date and activities which will then be distributed to parents either later this term or at the beginning of next term.

### **WA Assistance Payment**

Just a reminder to parents that you can claim \$150 for Kindergarten and primary school students, and \$250 for secondary students. Payments are available through the ServiceWA app.

Thank you for your support, have a lovely weekend.

Kind regards

Karen Tabnar

**Principal**













## From the Classroom



Hello Parents and Carers,

Kaya everybody and welcome to Term 2. What a busy and eventful start to the term we've had. We've welcomed new staff and it's great to see how quickly relationships are being formed - everybody needs to feel safe and secure at school and I think that is a very strong element of Woodanilling Primary School, and one of which we can be very proud.

Our learning programs for the term are already well underway and more information regarding what your child is learning this term will be sent home as soon as possible. We don't send homework home as a rule due to the amount of one-on-one time each child receives whilst at school, however there are sometimes somewhere extra repetition or practise may be required so I ask you to please try and fit this in. Daily reading is, as always, super important and the benefits of either reading to your child or your child reading are numerous and cannot be underestimated so please also try to fit in some daily reading.

A huge thank you to all families who donated the spectacular greenery for the children to make wreaths for ANZAC Day - this is an incredibly enjoyable activity for all children and they take such pride in what they've created.

Wishing you all a relaxing long weekend.

Mrs Kaylene Head

Teacher











## School News







Dear parent or carer,

Your State Government recognises the cost of living pressures Western Australian families are facing, as a result of higher interest rates and increased day-to-day costs.

Providing cost of living support to Western Australians is our number one priority.

We also believe that nobody in Western Australia should be left behind in their education. All students should have what they need for school – regardless of their financial situation.

**That's why we are pleased to introduce a new initiative to help with cost of living pressures for families with school-aged children.**

**The new WA Student Assistance Payment will provide parents and carers with a \$250 payment for each secondary student, and \$150 for each primary school student or kindergartener.**

You will need a valid WA Student Number (WASN) to be eligible for the payment. Please see attached important information on where to find your child's WASN.

The payments will be available through the ServiceWA app from the start of Term 2 (April 15), and we encourage you to use the coming weeks to set up your ServiceWA account and digital identity. Further information is available at [wa.gov.au/servicewaapp](http://wa.gov.au/servicewaapp).

Visit [education.wa.edu.au/wasap](http://education.wa.edu.au/wasap) for information on eligibility and how to claim.

We hope this initiative provides both relief to the family budget and an important investment in your child's education.

Yours sincerely,

A handwritten signature in blue ink, appearing to read "Roger Cook".

**Hon Roger Cook MLA**  
Premier of Western Australia

A handwritten signature in blue ink, appearing to read "Tony Buti".

**Hon Dr Tony Buti MLA**  
Minister for Education

## What's a WASN?

A WASN is the WA student number issued by the School Curriculum and Standards Authority (SCSA) at the time of enrolment.

It is an 8-digit number and is sometimes called a SCSA or student number. This number can be found on school reports, including previous NAPLAN results. It may also be on a secondary student's SmartRider.

If your child is in Kindergarten or if you need assistance to identify your WASN, contact your school.

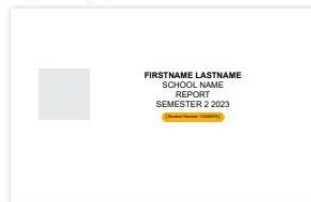
### SmartRider



### NAPLAN results



### School report



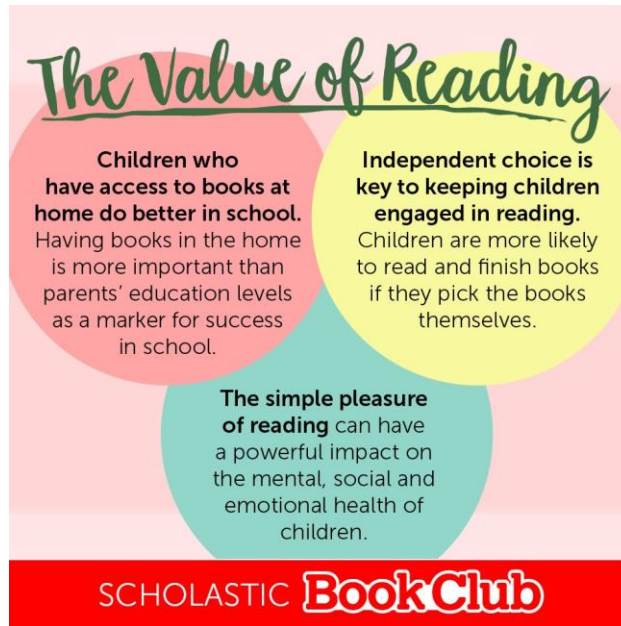
## Voluntary Contributions

If \$45 could be paid by end of Term 2, it would be greatly appreciated. Monies raised from contributions support the curriculum delivery for the children. Payment can be made by any of the following methods:

- In person by cheque
- Cash
- Electronic Fund Transfer (EFT) Payments can be made via EFT into the school bank account, details as follows: Woodanilling Primary School

BSB: 066 040 A/C: 1990 0217 Reference: Student Name





*1 - Book Club orders are now open through the [LOOP](#) app. Please note when ordering that you select Woodanilling Primary School as the school and select Whole School as the class, we do not have individual classes on LOOP. If you have any questions about ordering, please contact Claire in the front office and she will assist you.*



## Woodanilling Primary School Council



Our next council meeting will be held on the 29 May.

If you would like to become a member of the Woodanilling Primary School Council, please contact Karen at the school and she can talk you through the process.

Council confirmed the School Development Days for 2024:

### **Term 1**

Monday 29th January

Tuesday 30th January

### **Term 2**

Friday 26th April

### **Term 3**

Friday 16th August

### **Term 4**

Friday 25th October

## Members

Karen Tabner - Principal

Bindi Murray - Community/Council Chair

Kaylene Head - Staff

Sonja Hannan - Staff

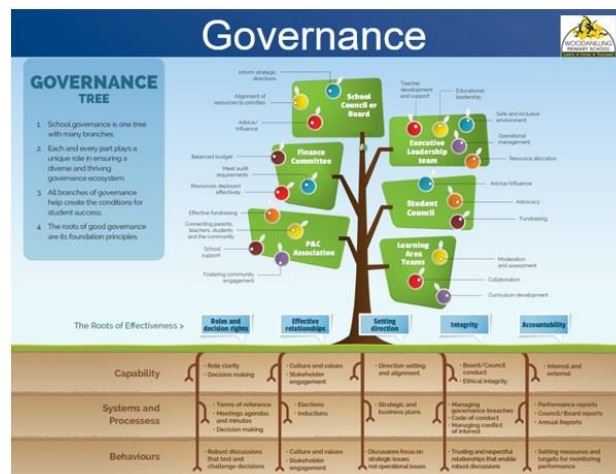
Claire Marsden - Scribe

Brooke Moulden - Parent

Damien Stephens - Parent

Lesley Trimming - Community

Tracey Kippin - Community



## Woodanilling P&C



Hi all, well end of term is here!

This term the P&C supported the Music a Viva excursion and the part of the cost of the school photos. Thank you to all who catered and worked at the Bus Entrance revamp busy bee, we had a good turn out and moved a lot of old shrubs and the fellas made light work of the old pine tree stumps, we look forward to helping to plant the new plants and seeing the play area under the fig tree take shape!

Our thanks also goes to outgoing principal Aleks Mutavdzic, a short but sweet stint at our awesome school, we wish her all the best for her new appointment at Kondinin Primary School.

It's great to see the IBC set up at the carpark gate for the collection of cans and bottles. Please spread the word as this is a great fundraiser for the P & C. It's a handy local drop point for your cans and bottles and a great way to support the school children at the same time! Thanks to Sonja and Gerakai for arranging a ute and trailer load drop off to Wagin last week, this raised **\$264.10**! Thanks to Brian Gray for the use of his trailer and additional donation of cans.

**Please come along to our AGM set for Monday 22nd April 2.40pm** in the School Library. All are welcome and come along to learn how the P&C work and just what we do.

Enjoy the break and see you all in Term 2!

Danielle Perrie



President 0476601399.



## WHAT WE DO

A snap shot of our role within the school.

### Fundraise



Raise funds to enhance school resources & facilities. Including but not limited to subsidising programs & excursions plus supporting positive opportunities to benefit the students.

### Represent



Represent parents & community interests while facilitating effective communication for the school community. This includes nurturing a culture of kindness, respect, inclusivity & compassion.

### Engage



Foster community participation in the school which provides opportunities for engagement, collaboration & communication between parents, school, staff, students & other community members.

### Provide



Provide a quality, affordable, practical & friendly uniform shop service. Proudly displaying the schools logo LEARN. GROW. SUCCEED.

## CONTAINERS FOR CHANGE

The P&C is now registered for the Containers for Change program. Containers for Change is a recycling program which rewards the collection of eligible containers with a refund of 10c per item. Items can be collected and delivered to a refund point in Katanning or Wagin, at which you can nominate the P&C as your donation recipient using our Scheme ID: C10326397

# DONATE YOUR 10c CONTAINERS TO

Name: Woodanilling P&C

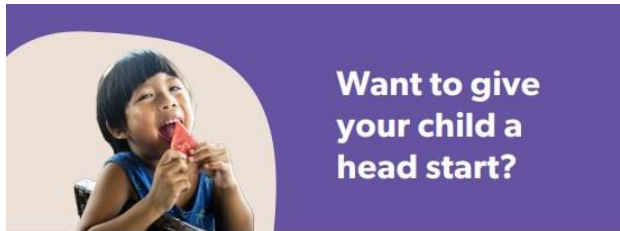
Member Number: C10326397



## School Nurse



Contact your local Community Health Nurse Sharon Muir on 98216278 for more information.



**Want to give  
your child a  
head start?**

**theactive8**  
program

Active8 is a **free, healthy lifestyle**  
program for parents, carers and  
their 2-5 year olds.

Do you...

- have a child aged 2-5 years old?
- need active play ideas?
- worry about their health?

We provide evidence based guidance  
around physical activity, healthy eating and  
nutrition to help you build confidence during  
meal times and form healthy family habits!

The program runs for eight weeks and is run  
by qualified health professionals in either  
an online or face-to-face format in your local  
community.

**Sign up today!**

📄 [www.theactive8.org/wa](http://www.theactive8.org/wa)  
☎ 1300 822 953



Scan me







**Participants receive  
great freebies and  
professional advice!**



**Sign up today!**

[www.theactive8.org/wa](http://www.theactive8.org/wa)

1300 822 953

**What's included on Active8?**

- Fun, weekly, game based online or in person sessions for eight weeks.
- Constant support from a qualified health professional.
- Targets to help form healthy habits with your child.
- Helpful resources that help your family become more active, improve eating habits and live well.
- Access to support through the Active8 community and group discussions.



[www.theactive8.org/wa](http://www.theactive8.org/wa)

1300 822 953

0409 745 645

@betterhealthco

@betterhealthcompany



Government of Western Australia  
Department of Health

**BETTER  
HEALTH  
CO.**



Want to prepare  
your kids for a  
healthier future?

## BETTER HEALTH PROGRAM

Is your child...

- Aged 6-12 years old?
- Above a healthy weight?
- In need of support to improve eating and activity habits?

The Better Health Program is a **free**, 10-week healthy lifestyle program for you and your child. Weekly discussions include topics such as good nutrition, forming positive habits, becoming a healthier family and being physically active.

The program is available in **online** and **face-to-face** formats.

Both versions include a bunch of **great freebies**, and a **reward** at the end!

  @betterhealthcompany

Sign up today!

 [www.betterhealthprogram.org/wa](http://www.betterhealthprogram.org/wa)  
 1300 822 953



Government of Western Australia  
Department of Health

BETTER  
HEALTH  
CO.





Participants receive  
great freebies and  
a reward at the end!

## BETTER HEALTH PROGRAM


### Available in two formats

**Online** – complete fun, online sessions with your child plus a weekly call with your own personal health coach.

**In a group** – attend 2-hour group sessions with your child, once a week in a local venue. Participate in family learning sessions, games and physical activity for your child.

### Sign up today!

 [www.betterhealthprogram.org/wa](http://www.betterhealthprogram.org/wa)

 1300 822 953





## Community News

### Linking TOGETHER



#### Carer Social Support Groups

#### Katanning

Taking a regular break and having a supportive social network improves wellbeing, is an opportunity to rest and recharge, and helps unpaid family carers to be in the best position to sustain their caring role.

Linking Together Social Support groups allow members to catch up and meet other carers in their local community. Coordinated by experienced volunteers, groups run monthly throughout the metro area and some regional areas.

Attendance is free and eligible to all carers, however carers are required to be registered with Carers WA.



**When:** 3rd Wednesday of each month | 10.00am – 11.30am

**Where:** Daily Grind

For more information, visit [www.carerswa.asn.au/social-support](http://www.carerswa.asn.au/social-support) or contact the Carers WA Social Support team on 1300 227 377 or email [socialsupport@carerswa.asn.au](mailto:socialsupport@carerswa.asn.au).

[www.carerswa.asn.au](http://www.carerswa.asn.au)

# Contact Us







*2 - Address: 22 Carlton St, Woodanilling 6316*

*Phone: 9823 2600*

*Email: [woodanilling.ps@education.wa.edu.au](mailto:woodanilling.ps@education.wa.edu.au)*