



PRINCIPAL'S ADDRESS

Dear Parents, Carers and Community Members, I am delighted to have won and accepted the position of Woodanilling PS Principal. I would like to thank Bindi Murray and the Wheatbelt Education Regional Director for running a successful application process. It is an absolute privilege to lead Woodanilling PS and I share this commitment with my staff to provide a quality education to every student. As I embarked on this placement, I have been impressed with staff, students, parents, and community members who all take pride in the school. I will continue to follow the strategic direction of the Department of Education for Every Student, Every Classroom, Every Day and Building on Strength. I have worked on the new strategic plan and priorities for 2023 – 2025 and I look forward to leading the team to achieve the targets we have set and implement explicit teaching approaches.

Again, it is a privilege to work alongside all of you as we continue to strive in delivering excellence in public education at Woodanilling Primary School.

Miss Fidler and Chappy attended professional learning about the delivery of a program in the early years classroom and found it beneficial. Miss Fidler and Mrs Head attended further professional learning about our new program, InitialLit, ensuring effective teaching of literacy from Foundation to Year Two. They found it helped to identify ways we can ensure the implementation is effective and that the school is following the evidence-base of its development. They are both excited to put a plan in place to develop all the resources and refine how it is delivered to the students. This initiative was funded by the Department of Education's Preschool Reform Agreement funding and is part of the Greater Southern School Network approach to literacy delivery.

On Monday and Tuesday, Week Nine, a Level Three Primary Principals' Conference will be held, and I am looking forward to attending this for some excellent networking and professional learning, specifically targeting our complex and challenging Level 3 contexts. Level 3 Principals are generally very time poor, especially with a teaching load, and this conference brings an opportunity to connect and share best practice. In my previous school, I had a strong network of principals I connected with regularly and the sharing of developed policies and procedures was important to keep our schools running effectively. Additionally, teaching and non-teaching staff in Level Three schools work hard as it is difficult to create professional learning teams and I commend Mrs Head and Miss Fidler for all the work they contribute to the school.

Michelle Williamson
Principal

Important Dates

TERM 2

Last day of Term Two - 30th June

27th June - Dockers Shield - Year 3 & 4

30th June - 100 Days of School celebration

30th June - 10:30am - Assembly - please stay afterward for morning tea

TERM 3

**First day of Term Three -Monday
17th July**

FROM THE CLASSROOM

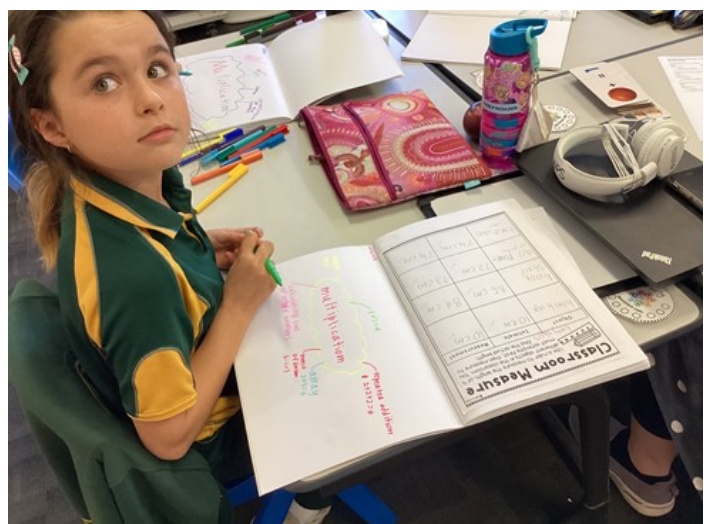
Hello Everyone,

We have had a great couple of weeks with lots of sensory experiences for the Little Woodies. They have recently enjoyed a fantastic storybook called *The Potato People*, by Pamela Allen. They attempted to recall the events in sequence from the story and then they created their very own superhero potato people, complete with superhero capes! In Maths, they have been exploring capacity by making their own playdough and investigating fractions by cutting their playdough into different amounts. Lastly, in our sensory bin, shapes had been hidden amongst a variety of beans and seeds, in which the children had to sort through to find the shapes and then classify each shape and state why they had classified it that way. The children really enjoy these sensory and hands on experiences and lots more of this is coming their way!

The Big Woodies are continuing their impressive performance, working their way through our novel study of *Nim's Island* and the accompany technical sentence and paragraph level instruction. They are now applying their knowledge of coordinating conjunctions, or FANBOYS, to their daily writing and this is a direct result of their novel study instruction. Letters to *Nim's Island* author, Wendy Orr, are under construction by each of the Big Woodies and will be sent soon.

Our latest art class was an introduction to revered Japanese artist, Yayoi Kusama, and her contemporary style. She is often referred to as "The Princess of Polka Dots" which is exactly what the children created. They drew a single picture in the middle of their page, then colour mixed and painted the surrounding background in a variety of dots. The results are outstanding and are on display in the classroom.

Think that's all for now! Mrs Head





Kindergarten enrolments are now open for 2024

If your child turns 4 years old before 30th June 2024, apply to enrol now at Woodanilling Primary School



SCHOOL NEWS

Term 3 the school will be holding a fundraiser for Jeans for Genes day on 4th August. Students and staff will be able to wear jeans in efforts to raise money. We have an online page where you donate or you can bring in cash donations to the school. This year we have aimed to raise \$500. Please visit the link or scan the QR code to donate to the schools fundraiser page. <https://fundraise.jeansforgenes.org.au/s/16924/18130>



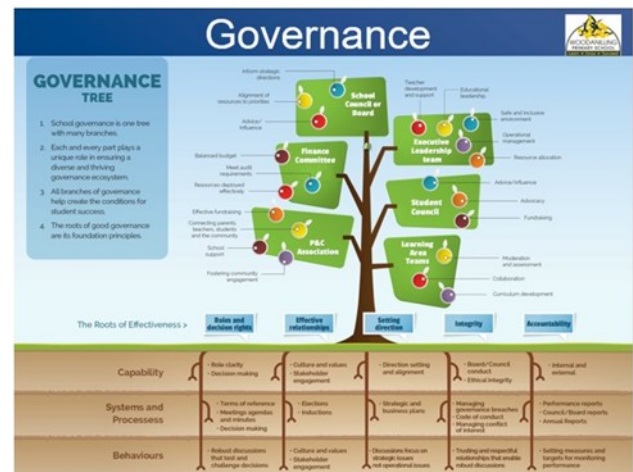
100 DAYS OF SCHOOL PARTY

- WHEN - FRIDAY 30TH JUNE**
DRESS - AS IF YOU ARE 100 YEARS OLD
- WHY - WE'VE WORKED HARD FOR 100 DAYS IN SEMESTER ONE**
- BRING 100 ITEMS - POPSTICKS, POPCORN, COUNTERS, PEGS, ETC**
- BRING - A PLATE OF MORNING TEA TO SHARE**
- PARENTS ARE WELCOME TO JOIN IN FOR A 10:30AM ASSEMBLY FOLLOWED BY MORNING TEA**
- LUNCH - SCHOOL WILL SUPPLY A SAUSAGE SIZZLE COOKED ON THE FIRE MADE IN TERM ONE**

SCHOOL COUNCIL

Woodanilling Primary School Council

- Michelle Williamson - Principal
- Bindi Murray - Parent/Council Chair
- Kaylene Head - Staff
- Sonja Hannan - Staff
- Claire Marsden - Staff
- Brooke Moulden - Parent
- Danielle Perrie - Parent/Pending NCCHC
- Damien Stephens - Parent/Pending NCCHC
- Lesley Trimming - Community
- Tracey Kippin - Community
- Grady Wilcox - Community/Pending NCCHC



SCHOOL NURSE

Bedwetting

Bedwetting, or nocturnal enuresis, is very common in children. Bedwetting has nothing to do with dreaming, and children who wet the bed are not “just being lazy”. If your child wets the bed, there are several things you can do to help, such as using a waterproof mattress cover and establishing a before-bed toilet routine. It is not helpful to punish children who wet the bed. Fluids should not be

restricted, even before bedtime. Sugary or caffeinated drinks should be avoided. If your child is still wetting the bed after five and a half years of age, seek help through a referral by your local doctor. A bedwetting alarm is an effective and safe method of treatment available for nocturnal enuresis and may be appropriate for your child. Contact your School Health Nurse on 9821 6278 for more information



13th June 2023

Dear residents of Woodanilling,

INFORMATION TO PROPERTIES AROUND THE SCHOOL SITE REGARDING OUR SCHEDULED BUILDING CONDITION ASSESSMENT

Building Condition Assessments (BCA) are carried out at all schools at regular intervals as part of the Department of Education's overall asset management strategy.

In addition to the inspection of buildings and internal areas, aerial surveys using drones will be used to capture footage of roof condition and coverings, including penetration points, box gutters and safety anchor points. In the previous 2018 BCA program drone aerial imagery was successfully used across all schools to capture roof condition and maintenance information.

The drone will operate within the school area to capture buildings, ovals, carparks, and surrounding street parking bays. The drone will ensure the privacy of neighbouring properties (i.e., not show private spaces in photos or videos, such as backyards).

The Department of Finance have engaged licensed drone operators from Duratec Australia who will conduct these surveys at our school site. Drone operators will be wearing uniform and carry appropriate identification.

Drones will typically operate during daylight hours, typically between 6.00 am and 6.00 pm weekdays, on weekends or during school holidays. Drone operators are required to comply with the necessary insurances and certifications including:

- current Civil Aviation Safety Authority (CASA) safety rules and requirements; and
- the relevant Remote Pilot License (RePL) and a Remotely piloted aircraft Operator's Certificate (ReOC) certification.

All drone footage will be stored and maintained for internal use only.

Please therefore do not be concerned if you see drones flying over the school on Monday 19th June 2023.

Yours sincerely,

Michelle Williamson

Principal

Carlton Street, Woodanilling WA 6316

08 9823 2600 | woodanilling.PS@education.wa.edu.au

Learn · Grow · Succeed



Learn · Grow · Succeed

Address: 22 Carlton St, Woodanilling 6316

Phone: 9823 2600

Email: woodanilling.ps@education.wa.edu.au