

PRINCIPAL'S ADDRESS

Dear Parents and Carers,

Students have been busy working hard and developing their skills and knowledge to demonstrate how they can apply it in a variety of activities. End of semester reports are being prepared and teachers are observing and identifying how students are progressing to make their final judgements.

The ACER Progressive Achievement Test (PAT) is a normed assessment that can rank student outcomes against all Australian children. It is one piece of evidence we use to support teacher judgement. An important part of analysis of data is understanding why a student chose an answer, especially in maths. To support problem-solving in maths we are introducing Newman's Error Analysis which breaks down the five steps involved in solving a mathematical word problem. A key part of problem-solving is taking the time to understand the question and then how to solve it as there may be many options.

Brightpath is another measurement tool we use for writing and can be applied to many types of writing. Students complete a 'cold task' on a topic and the teacher identifies the teaching points that need to be addressed. They work on these for several weeks and then complete a 'hot task' as a measurement against normed samples, thereby providing a moderation for their work. We are also investigating the Brightpath Maths which gives instant data and information about students' mathematical ability. Brightpath has been endorsed by the School Curriculum and Standards Authority (SCSA), our governing body, that is responsible for Kindergarten to Year 12 curriculum, assessment, standards and reporting for all Western Australian schools.

In previous schools, I have sent end of semester reports home via email and would like to introduce that process at Woodanilling PS. The reports are set up to send an email to each family email and it contains a link to open the report. Once opened, you can save the report on your computer. We have all family email addresses and frequently send information home using these, so I feel confident it will be successful. If a printed copy is needed, just come and ask at the office.

If you have any objections or need further information about the process, please come and see me.



Important Dates

TERM 2

5th June—WA Day Public holiday

FROM THE CLASSROOM

Hello Everyone,

It's incredible to think we are past the mid-way point of the term already! Our classrooms have been busy with different testing, investigations, novel studies, and hands on games; all of which equals some fantastic learning and confident children! We've had a fair run of sickness these last two weeks and it was a sight to see when everybody was back on deck together; the children really have formed a unique bond and strong relationships with each other.

I asked the Big Woodies what they would like me to discuss in this newsletter and they said Nim's Island. This is our novel study which the children are finding quite fascinating. Nim is the main character; a young girl living on a deserted island with her scientist father (who's currently lost at sea), and her pets; a sealion called Selkie and an iguana called Fred. Each chapter has us focusing on a different 'Big Picture' comprehension question, as well as different vocabulary, syntax and grammar lessons spread throughout. We are looking forward to finding out if Nim's Dad comes back soon.

The Little Woodies have been exploring length in maths recently, which has seen them take a walk outside to collect a variety of different sized leaves. They then had to order these from shortest to longest and give reasons for their ordering. We have some skilled measurers in class! They have also been working hard on developing and building their number sense; this takes place through numerous and varied activities such as matching the numeral to the quantity, counting out a collection of items and writing the corresponding numeral and then finding that numeral on a number line, finding the numbers that come before and after a particular number, solving simple subtraction and addition sums using counters, and many more. It's critical to build a strong foundational understanding of numbers to twenty to ensure further learning can reach its optimal peak! Miss Fidler and I have been impressed with the number sense on display by our young learners.

Lastly, we have recently explored the works of Russian artist, Wassily Kandinsky, who was, allegedly, the first abstract painter. He experimented with colour mixing and shapes to create some eye-catching pieces. All of our Woodies created their own masterpieces yesterday, after investigating colour mixing with the primary colours to create secondary colours and then explored how different strokes created different shapes. The results are impressive and will be on display soon.

Think that's all for now! Mrs Head



SCHOOL NEWS

We would like to announce that our wonderful cleaner Maureen Steere, will be retiring from her position at the end of Term 2. Maureen started working at the school in 2001 till 2003 where she then had a small break and started back with the school in 2004 and has been with us ever since. We wish to thank Maureen for her time at the school and she will be missed by many. We wish you all the best with your future endeavours and thank you for all your hard work you have contributed to the school.

Dear Parents/Caregivers, We have recently put in our winter vegies. Potatoes, peas, carrots, spinach and beans. So hopefully soon we will see some little green shoots, In Aussie Optimism/Zones lessons we have been looking at our strengths. To focus on our strengths instead of our weaknesses means we are happier within ourselves and that effects all other relationships. I came across a quote that I

think is quite true. "Comparison is the thief of Joy" When we compare ourselves to others, we focus on things that we wish we were better at. This can leave us feeling defeated and flat. To focus on our strengths helps bring the best in us and we are also able to celebrate and encourage others in their strengths. Lets support one another to be the best version of ourselves we can be.

Take care ...Chappy



SCHOOL COUNCIL

School Council/Board training is a key initiative from the Department of Education to support schools to develop strong governance. Barry France, Collegiate Principal, met with Council members on Wednesday 31st May to run an introductory session. It started with a Kahoot quiz, and two teams took up the challenge. It was very competitive, as the teams worked to figure out the correct answer for each question, and at the end there were only a few points of difference. Along the way robust discussions were had about some of the issues that arose from the questions. Further information was shared and ideas for increasing our governance were discussed.

Barry showed the Council the Governance Tree which outlines all aspects that come together to support the governance of a school. When all of these are working together well, we have strong governance, and this provides our students with better outcomes.

After Barry left, the Council reviewed items on the agenda and newly developed documents to support the Council. Further drafts of the School Strategic

Plan 2023 - 2025 were made available. The final edited version of the Annual Report was also presented. It had been endorsed 'in principle' at the last meeting, only needing some editing. The Woodanilling Primary School Annual Report 2022 can be found at [School Overview Woodanilling Primary School \(det.wa.edu.au\)](https://www.det.wa.edu.au) under Reports.

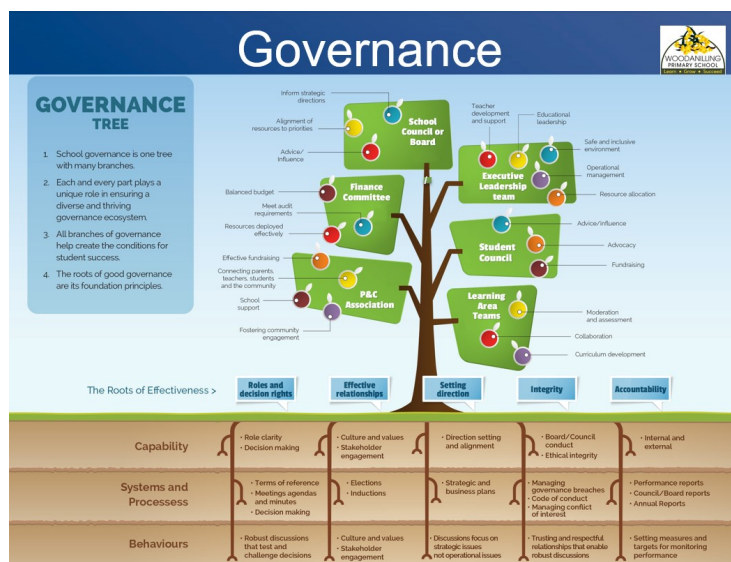
The next Council meeting has been scheduled for Tuesday, 15th August to give the Council time to discuss the final preparation of the Public School Review to be held on Thursday, 31st August.

We welcomed Mrs Kaylene Head onto the Council. On her nomination form she wrote, 'As the only teacher at the school, I want to be involved in decisions and conversations that impact the school.' Mrs Head was automatically accepted for a staff position, and it could be immediate as she has her Nationally Coordinated Criminal History Check (NCCHC).

We are looking forward to welcoming Damien Stephens to the Council, once his NCCHC is received.

Woodanilling Primary School Council

- Michelle Williamson - Principal
- Bindi Murray - Parent/Council Chair
- Kaylene Head - Staff
- Sonja Hannan - Staff
- Claire Marsden - Staff
- Brooke Moulden - Parent
- Danielle Perrie - Parent/Pending NCCHC
- Damien Stephens - Parent/Pending NCCHC
- Lesley Trimming - Community
- Tracey Kippin - Community
- Gradyn Wilcox - Community/Pending NCCHC



SCHOOL NURSE

The Blow Breathe Cough (BBC) Activity Upper respiratory tract infections or colds are everywhere, especially in winter, so it is almost impossible to stop children from catching them.

The Blow Breathe Cough (BBC) activities involves nose blowing, coughing into elbows, hand washing and doing a quick exercise and are essential for preventing the spread of germs that causes ear troubles, coughs and colds.

You can teach your child to blow their nose at home by following the Blow, Breathe, Cough routine below:

1. Blow your nose until it's empty. Using a tissue, push one side of your nose in and blow, then do the other side. Wipe your nose and throw the tissue in the bin. Repeat these steps again.

2. Wash your hands to keep the germs away. Wash your hands with soap and water. Wash your face. Dry it all with a paper towel.
3. Breathe through your nose to check that it is clear and empty. Take five deep breaths in and five deep breaths out through your nose.
4. Cough to clear the chest. Put your elbow up in front of your mouth and give two strong coughs.
5. Now it's time to do some exercise to get air into our lungs. Do 10 star jumps!

Acknowledgements to Hearing Australia August 2018.



FIND-A-WORD

Find and circle each of the words from the list below.

b	b	c	l	e	a	n
e	l	a	b	c	h	w
c	o	u	g	h	w	a
n	w	e	e	a	r	s
h	c	m	o	u	t	h
n	o	s	e	b	e	m
b	r	e	a	t	h	e

- | | |
|---------|-------|
| blow | nose |
| breathe | ears |
| cough | wash |
| mouth | clean |

For Healthy Ears and Good Hearing!