

# Woodanilling Wongi



December 2022



## **IN THIS ISSUE**

Shire Notes, Community Land Care News, Community Activities,  
Notices, Birthdays and Upcoming Events

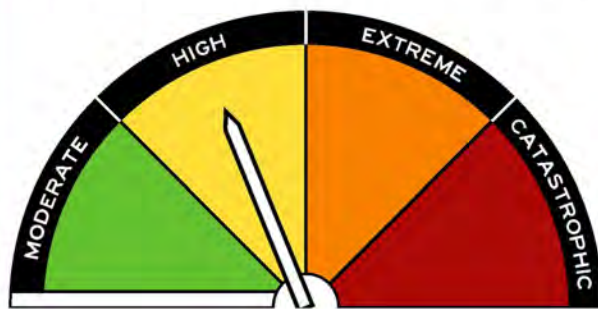
All supplies and materials are kindly donated by the Shire of  
Woodanilling.

# The Australian Fire Danger Rating System

**COMING SEPTEMBER 1**



## The Australian Fire Danger Ratings (AFDRS) levels are:



### MODERATE

Plan and prepare

### HIGH

Be ready to act

### EXTREME

Take action now to protect life and property

### CATASTROPHIC

For your survival, leave bushfire risk areas

The AFDRS will also introduce a new Fire Behaviour Index – a scale of fire danger that takes the latest in fire science and produces outputs across eight different fire behaviour models (compared to the existing two fire behaviour models). Providing fine detail, it will support decisions about fire preparedness and bushfire suppression.

The Australian Fire Danger Rating System (AFDRS) Program is redesigning the forecasting of fire by

- Improving the scientific accuracy behind fire danger predictions.
- Improving the way that fire danger is communicated.
- Providing government and industry with better decision-making tools.
- Reducing the costs associated with bushfire impacts.

For more information speak to:

Or visit: [www.afac.com.au/initiative/afdrs](http://www.afac.com.au/initiative/afdrs)



This is a national program funded by the Commonwealth and all the States and Territories and delivered by local implementation teams. The AFDRS is being coordinated by NSW RFS and AFAC (the National Council for Fire and Emergency Services), with support from the Bureau of Meteorology. A National Program Board, with representation from each of the State and Territories' fire agencies, is overseeing the program.

**WORDS FROM THE SHIRE PRESIDENT**

Well November has already passed and we are into the festive season. I would firstly like to wish you all a Merry Christmas and Happy New Year. With harvest commencing in what has been a slow start, I have also experienced my first 12 months as Shire President, learning and understanding how embracing change as farmers do with the weather. I wish to thank my fellow Councillors who have supported me as working as a team is extremely important. We are all leaders in our own way and each one of us brings a different skillset to the decision making we do as a Council.

We are embracing change with Kellie here and as a whole we all are driving one common theme – we all embrace Woodanilling and embrace the lifestyle, passionate and thriving small town that represents each one of us.

We have seen some local residents pass, along with some changes in the Shire, I send my thoughts to those who will not have those dear to us present over the festive season. The Shire is looking forward to 2023, as we will continue to grow and move forward.

I once again like to wish you all a very merry Christmas and hope you have a wonderful new year. We will see you all in the new year.



Shire President  
Cr Stephen Jefferies

**WORDS FROM THE CEO**

What a year it has been for the Shire and staff in 2022. I wish to thank the residents for taking me into the community and experiencing the passion that Woodanilling holds. I would like to celebrate the year by the support and the start of activation that we have managed to achieve, with more to come in 2023.

I would like to thank the Elected Members for the journey we have been on with more on the horizon. As family and friends join for the festive season, and we welcome in 2023, the Shire will be on the Christmas break however we open January with the Australia Day Breakfast, so save the date. If you are aware of any special people that would need to be recognised, please see the Shire to nominate that special person, group or outstanding citizen for the awards on this day, please do so.

And lastly, as I write this, the Woodanilling Town and Kenmare Hall are at the presentations for Tidy Towns Finalist awards held in Perth on Friday 25th November. Cr Douglas, Annabelle, Pauline, Sally along with Sue (DCEO) are representing our communities for the announcement. What a proud achievement to have been nominated for two sections. The drive and passion by all those who were involved has put Woody as finalist in two categories.

Congratulations to the Woodanilling Kenmare Committee and the residents of Woodanilling for the nomination.

Stay safe, enjoy family and friends and we will see you in 2023



Chief Executive Officer  
Kellie Bartley



## SHIRE NOTES

### 2023 COUNCIL MEETING DATES

- January 2023 – No meeting to be held. 21
- February 2023
- 21 March 2023
- 18 April 2023
- 23 May 2023
- 20 June 2023
- 18 July 2023
- 22 August 2023
- 19 September 2023
- 24 October 2023
- 21 November 2023
- 19 December 2023

Woodanilling Shire wishes to advise the following dates for the 2023 Ordinary Meetings of Council starting at 4pm to be held at the Council Chambers 3316 Robinson Road Woodanilling. Two meetings will be held within the district. These dates are to be confirmed.

Kellie Bartley  
Chief Executive Office

### R U PREPARED

Bushfire Season is upon us and we want to ensure the safety and readiness of our community. Do you have your preparedness plan in place? Have you had the discussion with your family and do they know your plan? In preparation for the fire season, you will find a DFES advertisement about preparedness.

The link below will direct you to a website to help you put together your bushfire plan. We wish you all a happy festive season if you are travelling on the roads don't drive tired and stay safe  
<https://mybushfireplan.wa.gov.au/>

### SHIRE CHRISTMAS/NEW YEAR CLOSURE



**Shire Office Closes - 23rd December 2022 at 12 Noon**  
**Reopens - 9th January 2023**



**Depot Closes - 23rd December 2022 at 12 Noon**  
**Reopens - 10th January 2023**



**Rubbish Tip wont be open - 25th December 2022**  
**and the 1st January 2023**

#### EMERGENCY CONTACTS

CEO- 0428 032 089

Ranger enquiries—0424 704 812

**Staff & Councillors wish everyone a safe & Happy Christmas & New Year**



**PLAN AHEAD: STAY CONNECTED IN A DISASTER**

While telecommunications providers prepare for natural disasters, no form of communications technology is 100% resilient in an emergency or natural disaster. The infrastructure that makes our communications work such as mobile phone towers/ base station can be directly damaged or experience interrupted power supply during a natural disaster.

This can happen quickly and without power, your home phone, internet modem, laptop or mobile phone may not work.

Think about how you will communicate if your mobile, landline and internet services are not available.

To help you prepare for an unexpected outage follow these steps: • Include a portable radio with a spare set of batteries in your emergency kit so you can stay up to date with emergency information.

Keep your mobile charged and have a backup power source, like a battery pack.

Have a paper copy of contact details for your family and friends, so if you get access to a phone (such as a pay phone), you can call them.

Have some cash on hand, as EFTPOS or ATMs may not be working if there is a natural disaster.

If you get caught in a natural disaster and telecommunications services are not available, you can monitor your local and commercial radio and television stations, as well as local emergency service websites and social feeds for up-to-date warnings and information.

Prepare an emergency plan and communicate with loved ones about your plans before you have to act on them.

Follow advice from emergency services personnel on the ground and Emergency Alert phone messages if received from them.

The system depends on telecommunications networks.

If these are unavailable in a disaster, you may not get a warning.

If you're concerned for your safety, don't wait to be told to evacuate –prepare and leave early.

Do your part to stay safe and stay connected until you're back online. Having a plan in place keeps you and your loved ones safe, informed and connected.

For more information about how to prepare for a telecommunications outage, visit [www.infrastructure.gov.au/STAND](http://www.infrastructure.gov.au/STAND).



## Tidy Towns Sustainable Communities Awards Ceremony Report

A group of Woodanilling representatives attended the 2022 Tidy Towns Sustainable Communities awards ceremony in Perth on Friday 25 November, Cr Dale Douglas, Sally Vermeulen, Pauline Edgcumbe, Sue Dowson and Annabel Paulley travelled to the awards venue at Fraser's Restaurant in King's Park, and enjoyed hearing about all of the amazing community projects from all over Western Australia. A total of 27 community finalists competed across eight categories in the Keep Australia Beautiful Council's annual awards.

Woodanilling was a finalist in two categories - General Appearance and Heritage & Culture. Our General Appearance entry included improvements to the town's entry statement, gazebo and signage at the railway precinct, vintage grader, banner poles, street tree plantings, new directional signs and planter boxes. Our Heritage and Culture entry featured the 100th birthday party for the historic Kenmare Hall. This went ahead despite a large section of the roof being blown off during a strong storm 5 days before the party was held.

Unfortunately, Woodanilling was not successful in receiving an award this year but the representatives enjoyed the experience and a delicious three-course lunch - which was all complimentary. Thank you to everyone who contributed to Woodanilling's entries, and a special mention to Kahlia Stephens and the other parents and children who cleaned up rubbish on Robinson Road prior to the Tidy Towns judges visit back in September. Well done to you all.

### Tidy Towns Sustainable Communities 2022

#### Award Winners

#### Category Winner and project

Litter Prevention and Waste Management  
Carnamah: Funding community groups via resource recovery

Young Legends Albany: Youth Advisory Council  
Heywire Project

Environmental Sustainability Gascoyne Junction:  
Water conservation and future-proofing

Environmental Education Williams: Williams  
Wildlife Warriors

Heritage and Culture Kalgoorlie-Boulder:  
Goldfields Aboriginal Language Centre

General Appearance City of Karratha:  
Beautification - Bayley Avenue, city roundabouts and streetscapes

Community Action and Wellbeing Horrocks:  
Glance over lookout

Future Leaders Award Nyabing: Adele Collins

Community Containers for Change Shire of Exmouth:  
Exmouth Containers for Change

Litter Legend Shire of Collie: Terry Ransome

State Winner Gascoyne Junction





# WAGIN/WOODANILLING LANDCARE ZONE

## Reptile season is here!

It looks like we will have a busy reptile season this summer with several call outs before summer had arrived. Remember you can contact Gen at the office if you have a reptile you want removed

We have removed a family of stowaway King's Skinks who took a trip from Perth to Wagin in the internal structures of an outdoor spa. After removing all we could from the spa, we caught the mumma skink, but the 2 babies were not keen to



be lured into a trap and were able to avoid us in tight spaces in the spa structures... this required

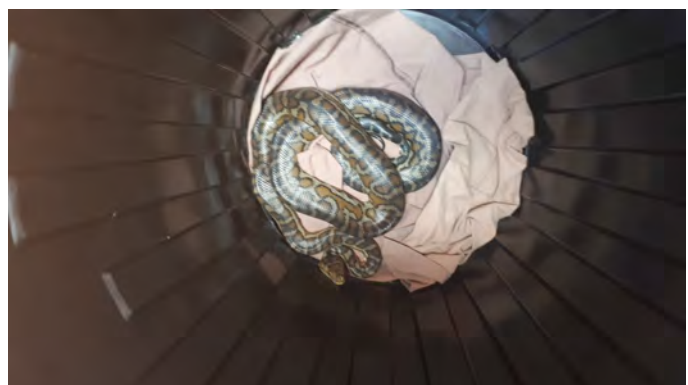
an emergency strategy... literally! We needed numbers to lift the spa after it had been emptied, and our local Wagin SES group stepped up to help out. With their very organised assistance, capture of the remaining 2 fugitives only took a few minutes... thank you once again to the volunteer community!



They were released into the bush and will hopefully choose to stay clear of spa's in the future!

After these guys were released we had a call for a snake retrieval. We found a love-huge carpet python in a residential back patio. Likely come to visit to hunt mice.

She was a straightforward capture and was released into a reserve away from the town site to keep her safe.







# WAGIN/WOODANILLING LANDCARE ZONE

Merry Christmas!

We will be closed over the Christmas break with Gen taking some time away.



The office will be shut from the 25th of December and will re-open on 15th Jan.

Gen will still be taking reptile call outs if needed outside of direct Christmas holiday dates, so you can contact 0428 231 506 during this period still if you need a snake removed.



Merry Christmas and have a safe and happy new year!



## PRINCIPAL'S ADDRESS

It is getting to that pointy end of the year. We have twelve school days left for the 2022 school year and each of them are action packed!

As the year begins to draw to a close, we understand family calendars begin to become increasingly busy. We understand at this time of the year, it can be easy to miss communications. Please don't hesitate to get in touch with our front office if you have any questions or queries with upcoming dates or events.

### END OF YEAR CONCERT

Our students have been eagerly rehearsing their concert items, which they are all very excited to perform for you. Please be reminded the End of Year Concert is on Monday, 05 December commencing at 3:30pm in the Under Covered Area. Families, please bring a plate to share for light refreshments following this event.

### STUDENT REWARD DAY

On Thursday, 15 December students will venture to the Wagin Cinema for their end of year reward. More information about this event will be released toward the end of this week. Please keep an eye out on our Facebook page and in your child's reading folder for further information.

### THERAPY DOGS

Our students have been very lucky to have Liz Worthington from Beaufort Hounds visit us with her gorgeous 11-week-old chocolate Labrador pups. Jazzi and Fletch have been welcomed to Woody Primary with open arms. Students have enjoyed sharing their concert rehearsals and their favourite picture book with Jazzi and Fletch. We are hoping to see this partnership continue into 2023.

### NATIONAL SCHOOLS OPINION SURVEY

Thank you to those of you who took time out of your busy schedules to complete the National Schools Opinion Survey. This data is valuable to the future planning of the school, and your input is greatly appreciated.

### SEMESTER TWO REPORTS

Please be advised our Semester Two student reports will be coming home Monday, 12 December.

Phoebe Anderson  
**Principal**

## Important Dates

### End of Year Concert

Monday 5<sup>th</sup> December, 3:30pm start

### End of Year Reward

Thursday 15<sup>th</sup> December, Movie in Wagin

### Term 4 dates for Students

Tuesday 11<sup>th</sup> October – Thursday 15<sup>th</sup> December

### Term 1 2023 dates for Students

Wednesday 1<sup>st</sup> February – Thursday 6<sup>th</sup> April

## SCHOOL NEWS

### VOLUNTARY CONTRIBUTIONS

As you would be aware, government schools do not have school fees. What we have instead is a system called Voluntary School Contributions.

At Woodanilling PS, this is set to \$45.00 a year for each student.

We use these funds to supplement a range of resources and consumables for students such as: cooking and science ingredients, art and craft materials and teaching aids to support learning across the curriculum.

To pay your contribution, you can pay online via direct debit to:

**Account Name:** Woodanilling Primary School

**BSB:** 066 040 **Account Number:** 1990 0217

If paying via direct debit, please include the child's family name in the description. If you would like to pay via cash or cheque, please come to the front office where Tracey will be able to assist you.

Thank you for your support.

## P&C NEWS

### CONTAINERS FOR CHANGE

The P&C is now registered for the Containers for Change program. Containers for Change is a recycling program which rewards the collection of eligible containers with a refund of 10c per item. Items can be collected and delivered to a refund point in Katanning or Wagin, at which you can nominate the P&C as your donation recipient using our Scheme ID: **C10326397**



### **Did you know?**

Woodanilling Primary School P&C Association is a registered charity with CBH Group?

This means, when farmers are processing their grain on LoadNet, they are now able to nominate the P&C via our Grower Number: 40550436 to receive a grain donation.

If you are unsure or require any assistance, please call the Grower Service Centre on 1800 199 083.

Please spread the word!



### **SCHOOL COUNCIL**

Your Woodanilling Primary School Council currently consists of 8 members who represent the Parents, Staff and P&C.

All members are available should you have any concerns, questions or ideas about Woodanilling PS.

Council met for our last meeting for 2022 last Thursday. If you're interested in being part of the council next year, please contact either the school or myself.

Feel free to contact me at any time on [bindimurray@gmail.com](mailto:bindimurray@gmail.com). We are here for you, your children and our community.

Bindi Murray  
**School Council Chair**

### **FROM THE CLASSROOM**

Our classroom looks very festive. We are so busy wrapping presents and decorating the tree and making pine cone decorations.

To continue with the festivities we would love your help. We would love some assistance with the following donations. Small empty food boxes so we can continue to perfect our wrapping techniques. Cake mixes and biscuit mixes so we can make and decorate Christmas creations.

## **CHAPLAINS CHAT**



**Dear Parents/Caregivers**

I thought that it would be a good idea to refresh our minds with another look at the P.O.O.C.H. acronym and how it can help us to process things by slowing down and considering what will be the outcomes and consequences of some of the choices we make.

**P.O.O.C.H.**

- P What is the Problem?**
- O. What are my Options?**
- O What are the possible Outcomes?**
- C Choose one to act on**
- H How did it go?**

It is a great way to help our children look at things especially if they are feeling anxious, overwhelmed or have trouble making decisions. (This principle works well for us adults too!!)

I have spent some time going over this again in the classroom and given each student a copy of the worksheet to take home.

Please feel free to copy and use this as many times as you like.

**Blessings**

**Julie-Ann Evans**

**(Woodanilling Primary School Chaplain)**



**Woodanilling Primary School**  
 Carlton Street  
 WOODANILLING WA 6316  
**TELEPHONE:** 9823 2600  
**ABN:** 21 226 316 781

**2023 VOLUNTARY CONTRIBUTIONS & CHARGES – Years K – 4**

Voluntary Contributions Curriculum Area	Extra Cost Options							
	The charges below are collected as required and not paid in advance. Estimated maximum cost							
	STEAM	ITEM	K	P	1	2	3	4
Science – eg: borax, bi-carb		* IncurSION/Excursion	\$50.00	\$50.00	\$50.00	\$50.00	\$100.00	\$100.00
Technology & Enterprise – eg: glue & tape		* Bus Travel	\$50.00	\$50.00	\$50.00	\$50.00	\$50.00	\$50.00
English – eg: paper		Swimming		\$40.00	\$40.00	\$40.00	\$40.00	\$40.00
Arts – eg: materials, glue & equipment								
Mathematics – eg: paper, rulers								
Humanities and Social Sciences – eg: paper			\$5.00					
Health – eg: cooking			\$10.00					
<b>TOTAL PAYABLE</b>	<b>\$45.00</b>							

\* These extra cost options may be supplemented by the P & C.

**Please note that the Charges and Voluntary Contributions have been approved by the School Council.**

Payment can be made in cash to the front desk or via EFT. If paying via EFT please use your child's name as the reference.  
 BSB: 066 040 Account: 1990 0217

If full payment is unable to be made, a payment plan may be negotiated with the school.  
 If you have any questions, please do not hesitate to contact us on 9823 2600



Woodanilling Primary School

Carlton Street  
Woodanilling WA 6316  
Telephone: 9823 2600

## 2023 PERSONAL ITEM REQUIREMENTS

Your child requires the following items for 2023. It is appreciated that each item is **clearly labelled** with your child's name on it.

- 1 x library bag  
*Please ensure it is made of heavy duty material that will protect books adequately.*
- 1 x water bottle
- 1 x pencil case  
*(Please ensure the pencil case is large enough to fit your child's stationary items inside)*
- 2 x tissue boxes
- 6 x Bostik glue sticks
- 5 x whiteboard markers
- 2 x highlighter
- 12 x HB Pencils (**Kindergarten:** 12 x Jumbo 2B Pencils)
- 2 packs of wind up crayons
- 2 packs of coloured pencils (**Kindergarten:** Jumbo sized)
- 4 x erasers
- 6 x 64 page Scrapbooks (24cm x 33.6cm)
- 1 x sharpener
- 1 x ruler
- 1 x student diary  
*(This will be used as a communication measure between home and school)*
- 1 x pack coloured textas
- 1 x cloth homework bag  
*(available from Kowald's Newsagency in Katanning)*
- 2 x Artline 0.6 black fineliner
- A3 Portfolio

Spare items will be stored for your child throughout the year. Any items not used will be returned at the end of the year.

WOODANILLING PRIMARY SCHOOL P&C

welcomes all to the

# COMMUNITY CHRISTMAS TREE



\*  
**FRI  
16  
DEC**  
★

\*  
**FROM  
4.30PM**  
**SANTA  
5.30PM**  
★

**PARTY IN THE PARK**

**SANTA. FACE PAINTING. SAUSAGE SIZZLE. LOLLY BAGS**

**CENTENARY PARK, CARLTON STREET, WOODANILLING**

**Adults please BYO drinks, nibbles & chairs.**

**PARENTS PLEASE NOTE A \$15 LIMIT APPLIES ON PRESENTS.  
THE ITEMS MUST BE WELL WRAPPED, LABELLED CLEARLY WITH FIRST &  
LAST NAME & LEFT AT THE SHIRE BY 4PM THE DAY PRIOR.**

# PLAYGROUP

Playgroup meet weekly and alternate between the School, Park, Rec Centre and CWA building. For more information please contact kahlia 0439 754 391.

## Upcoming sessions

08/12/2022—Location to be confirmed 9.30am

12/12/2022 - Woodanilling Primary School 9:30am

Keep an eye on our Facebook page for upcoming session for 2023.



# The Woodanilling Men Shed

Corner Robinson and Burt Roads Woodanilling 6316

Well we have come to the end of another year and we are still here. The year has been quite kind to us and we have managed to upgrade a lot of our equipment and storage facilities. We go into 2023 with high hopes and expectations of another successful year.

Hopefully (weather permitting) by the time you are reading this we should have completed the renovations of the local post office and store and have our christmas tree's lit up in our windows.

The Members of our Shed would like to wish our Community and our generous sponsors a

## ***"Very Merry Christmas and a Happy Happy New Year"***

We are always on the lookout for new members. Yearly membership is only \$40.00 It is used mostly to cover our insurance premiums to ensure we are all covered for any unforeseen circumstances..

We are open and welcome new members Tuesday and Wednesday mornings from about 8.30am till noon, although finish time is flexible according to the weather and how we are feeling. **We will be closed over Christmas/New period.**

You can contact us at the Shed or by phone;

President: Brian Paddon 04073387010

Vice President: Steve Fitzpatrick 0410393296

Secretary: Rod Marshall 0437014941 (leave a message)





## CWA NEWS



December is upon us and busy times ahead with harvest, Christmas and the many preparations that go with that. As already noted in last months Wongi, the usual Senior's Christmas Lunch in Woody will not be happening but there are opportunities to attend the Lions' one in Katanning.

Our gardens are looking great so take a wander and enjoy. Woody Playgroup has been a revelation - babies and young people - what joy and fun. Our little cottage positively sings! I hope this continues next year!

Best wishes to you all for a happy Christmas and a healthy New Year

## WOODANILLING COMMUNITY CHURCH

Church Service 10am every Sunday.

Come and give praise to God and feel the holy Spirit uplift your soul and take away your fears.

There is movement happening in this church.

We invite you to come and be part of it.

More info. Contact Marion Taylor 0422337857

## SHORT MAT BOWLS

A steady attendance has meant a healthy competition with four bowlers clearly in the lead heading for the finals. Ray, Marj, Laurie and Barb are consistently putting down some accurate bowls! I wish i could say the same for myself but we have fun and enjoy the camaraderie and a cuppa afterwards. Anyone can still join this year before we recommence after the new year.

Our Friday corporate team that plays in Katanning has had mixed results - the last where none of us could do a thing right! However, it's all in the name of fun too!!!! We'll also restart that in the new year.



## SUPPORT OUR LOCAL WOODANILLING BUSINESS



Woody Tavern, part of the Bottlemart family. Offering weekly specials at very competitive pricing, with a great range of premix spirits and a great range of local wines and imports.

This Months Special - No fixed address \$10.99 bottle

2023 the Woodanilling Tavern is making changes  
The kitchen will only open on nights with prior bookings. Group bookings will not be served unless booked prior to the day of arrival. This is to keep cost down and to ensure we have staff on to serve you we appreciate your custom but due to health and staff issues we are forced to do this  
Thursday & Friday- 4pm to late  
Saturday & Sunday- 12pm to late  
9823 1508 or 0427 479 423.



We would like to wish you all the customers are very safe and Happy Christmas and New Year

### THE WOODANILLING GENERAL STORE

Monday, Tuesday, Thursday & Friday 7.30am to 3pm  
Wednesday 7.30am to 12.00pm

**WHEN YOU ARE SUPPORTING A SMALL BUSINESS YOU ARE SUPPORTING A DREAM**

### JUSTICE OF THE PEACE

Did you know that we have 4 JP's in Woodanilling? Well we have and they are:

Ray Baxter - 9823 1546

Russel Thomson- 0419 950 217

Peter Bartholomeusz- 0447 771 511

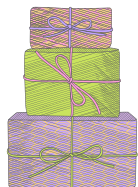
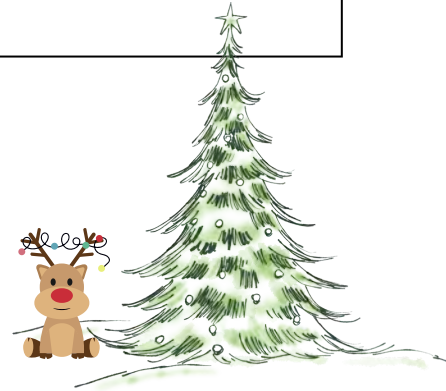
Stephen Jefferies- 9823 1508



## DECEMBER BIRTHDAYS



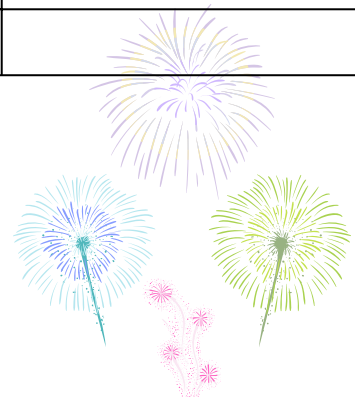
3rd Angela Owen	13th Eva Wise	21st Tex Wise
5th David Hislop	14th Rick Wise	22nd Cathi Bessell-Browne
6th Penny Shackley	14th Tim Brown	24th Jaylin Hayward
7th Kyeisha Hayward	15th Tony Boulton	25th Rhys Mader
7th Nicholas Wilcox	15th Alex Douglas	25th Bridget Powell
7th Sheila Hughes	15th Lara Owen	25th Heather Thaxton
8th Mark Hislop	16th Donald Carter	27th Vaughan Baker
11th Marilyn Mills	17th Peter Wilhelm	29th Charlie Bessell-Browne
11th Joseph Shackley	18th Mal Baxter	30th Lucy Quartermaine
13th Amy Bolt	18th Josh Kippin	



## JANUARY BIRTHDAYS



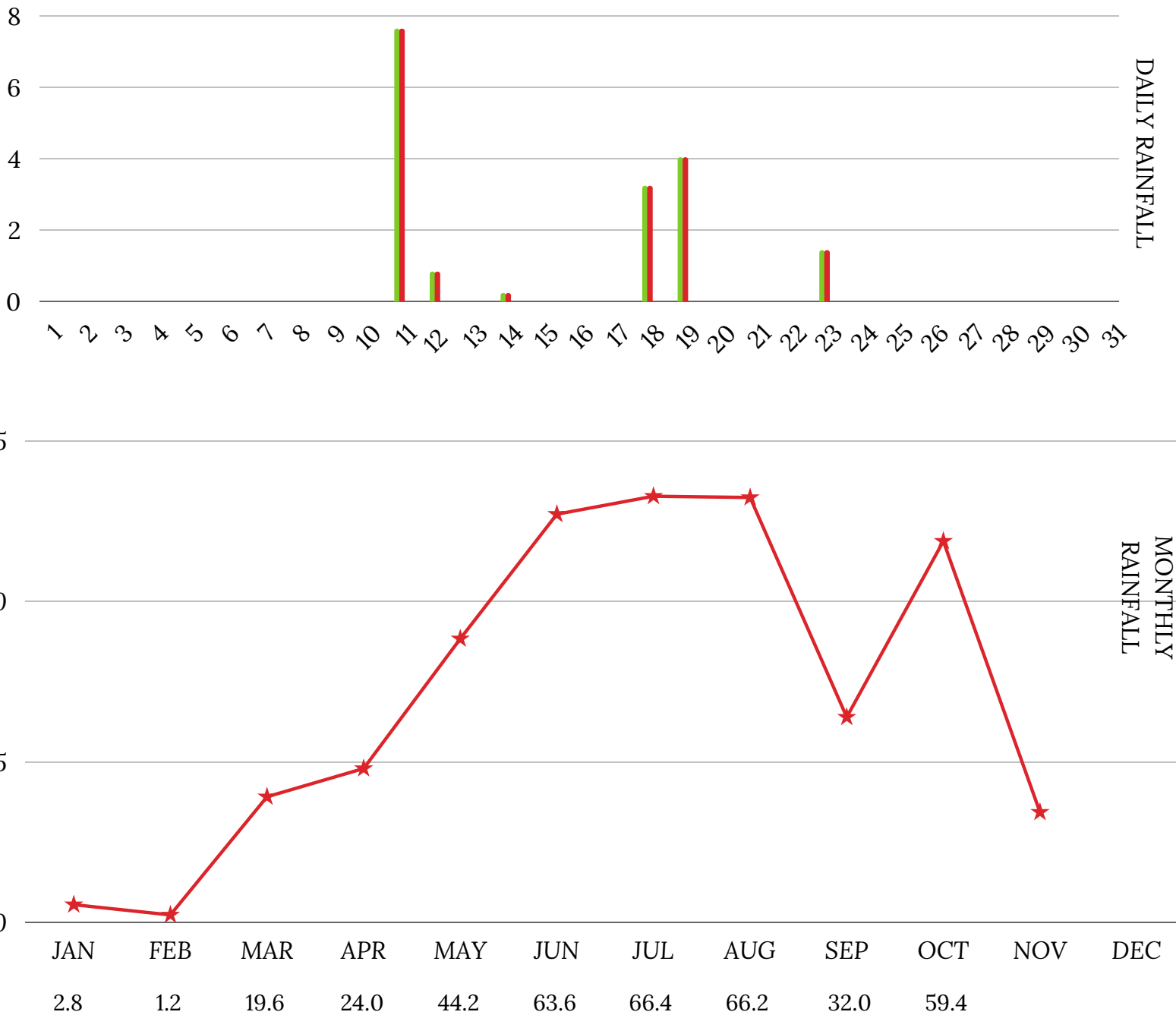
1st Bonnie Eckersley	13th Mitchell Baxter	28th Serenity Shackley
2nd Kerry Crosby	15th Helle Crossley	29th Hugh McFarland
2nd Kevin Powell	18th Kahlia Stephens	30th Benjamin Wilhelm
2nd Pip Treloar	18th Morris Trimming	30th Shaun Shackley
5th Bryce Passfield	20th Damien Stephens	30th Sam Trimming
11th Lynette Carew-Reid	21st Julie Brown	30th Tegan Wise
12th Frank Mader	23rd Ian Garstone	



# EVENT CALENDAR

16th December	Community Christmas Tree
20th December	Ordinary Council Meeting
24th December	Christmas Eve
25th December	Christmas Day
31st December	New Years Eve
1st January	New Years Day

## CURRENT RAINFALL 2022



We know your soil because we **dig deeper** into the data

**Soil test with inSITE, our industry leading soil analysis program**

- Independent laboratory.
- Rapid turnaround times.
- Wide range of analytes measured.
- Product recommendations based on results.
- Support from your experienced Area Manager.
- View results on SummitConnect.
- Customer owned data.



Speak with Chloe  
to learn more

Mobile: 0447 469 245 Email: [cturner@summitfertz.com.au](mailto:cturner@summitfertz.com.au)

## We're hiring in Woodanilling

Follow your passion with a career in aged care. Catholic Homes has been providing aged care for over 50 years in Western Australia and are looking for people to join our Home Care team.



We are looking for caring and passionate nursing and support workers for our home care services in the Great Southern.

Our Care with Purpose people-centred care model promotes dignity, respect, privacy and independence.

As a not-for-profit organisation, we are inclusive and welcome all faiths and backgrounds.

We offer competitive hourly rates, casual loading and full training. We have both permanent and casual roles available now.

If you would like to discuss further call 1300 244 000  
or email your CV to [homecare@catholichomes.com](mailto:homecare@catholichomes.com)



*care with  
purpose*

# NEATCARE TREE SERVICES

## TREE LOPPING & PRUNING

Email: [sales@neatcare.com.au](mailto:sales@neatcare.com.au)  
[neatcaretreeservices.com.au](http://neatcaretreeservices.com.au)

 Neatcare Tree Services

# 0409 782 628

### Woodanilling Spreading Service

Spreading service for Woodanilling & surrounding areas.  
Load Cells & GPS, Loader Lime, Super, Urea. Pick up from CSBP Wagin available.



Phone : Tim Brown  
0418 470 920 or 98231 115  
[timothy.brown@bigpond.com](mailto:timothy.brown@bigpond.com)



### We are registered!

**Did you know that you can nominate the P&C to receive a donation through the C4C program?**

When you visit the KATANNING or WAGIN depot, all you need to do is nominate us as your donation (as little or as much as you'd like) recipient by using our ID.

**Scheme ID: C10326397**



PLEASE  
DRIVE SAFELY  
ON OUR ROADS  
THIS  
HOLIDAY SEASON  
-  
ENJOY THE RIDE

MERRY CHRISTMAS  
FROM YOUR LOCAL MEMBER FOR ROE

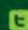

**Peter Rundle MLA**  
MEMBER FOR ROE

Narrogin Office  
PO Box 378  
Narrogin WA 6312

Ph: 08 9881 1225

Esperance Office  
107 Dempster St  
Esperance WA 6450

Ph: 08 9071 6555

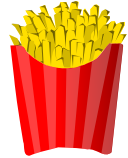
 @PeterRundleMLA  facebook.com PeterRundleRoe

E: [Peter.rundle@mp.wa.gov.au](mailto:Peter.rundle@mp.wa.gov.au) | [www.peterrundle.com.au](http://www.peterrundle.com.au)

**THE NATIONALS** for Regional WA



# DAVE'S CAFE



Avalon Caravan Park

**Woodanilling**

**PH: 0477064823**

**0475142663**

**UNDER NEW MANAGEMENT**

**Breakfast, lunch & dinner**

**Dine-in & Hot take-aways**

**Cold drinks & great milkshakes**

**Open from 8am to 6pm**

**(subject to change)**

**Orders welcome**

**EFTPOS available**

**Drop in for a yarn with Tammy & Spydah**



# GOLDACRES

Currently taking orders for all Goldacres spray equipment

## Agricultural chemical spray equipment

Australia's most innovative agricultural chemical sprayers



**Call Shane at Perkins Machinery 0429 947 434**



### Self Propelled Crop Cruiser Range

High capacity, high clearance and high-performance!

Designed for operators who demand the very best in sprayer performance, efficiency and comfort.



### Trailing Sprayers and Booms

Goldacres have a wide variety in their Prairie Range of trailing sprayers!

There will be one to meet your needs



### Batchmate - 800i

The Batchmate is portable, easy to use, and proven.

The Batchmate gives the operator the benefit of:

- Lower fuel costs
- Faster fill time
- Improved mix quality
- Greater productivity

**[perkinsmachinery.com.au](http://perkinsmachinery.com.au) 9881 2222**



Phone (08) 98 211 471  
Fax (08) 98 211 473  
A/H Emergencies  
0427 017 462

3/114 Clive Street  
PO Box 841  
KATANNING WA 6317

Find us on Facebook

[www.kojonupvethospital.com.au](http://www.kojonupvethospital.com.au)  
[kvc@kojonupvethospital.com.au](mailto:kvc@kojonupvethospital.com.au)



### Home Maintenance & Renovations

Call Greg

0424 474 284



## All Good Refund Depot

20A Tavistock Street  
Wagin WA 6315  
9am - 1pm Thurs, Fri & Sat  
Phone 08 9861 2500  
Drop Off & Pick up Hotline  
0439 956 175





# SWIMMING CLASS *for kids*

MONDAY 3.00 STAGE 3  
 MONDAY 3.45 STAGE 4  
 MONDAY 4.30 STAGE 5  
 TUESDAY 4.30 STAGE 2  
 WEDNESDAY 4.30 STAGE 1

SATURDAY  
 STAGE 1 12.30PM  
 STAGE 2 1.15PM  
 STAGE 3 2.00PM  
 STAGE 4 3.45PM  
 STAGE 5 3.30PM



TERM 4  
 NOV 14 - DEC 15  
 \$25 PLUS ENTRY

**BOOK NOW**



[kataquasports@gmail.com](mailto:kataquasports@gmail.com)

## CLIVE STREET - KATANNING Twilight Christmas Market

LIVE MUSIC MARKET STALLS SANTA FOOD VANS



THURSDAY, 15TH DECEMBER 2022

5PM - 8PM



COMBINED CHURCHES EVENT

## KATANNING CAROLS IN THE PARK

NEW DAY  
 & VENUE!

SATURDAY 10TH DECEMBER  
 PIESSE PARK AMPHITHEATRE



**4PM FAMILY FUN FAIR**  
 KIDS GAMES, BOUNCY CASTLE, FOOD VANS,  
 ANIMAL FARM & ENTERTAINMENT

**7PM CAROLS SERVICE**



WHAT TO BRING: A picnic blanket or chairs.

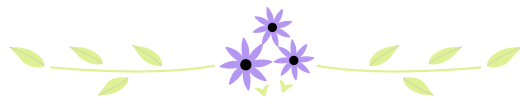
Non-perishable goods to be donated to a local organisation to distribute to those in need this Christmas.

Event supported by the Shire of Katanning.  
 Any enquiries contact Tania Severin on 0448 211 511.



## **WONGI CONTRIBUTORS**

All contributions are to be sent to the new Wongi email or to the volunteers listed below; or may be left at the Woodanilling Store in a box provided or handed into the Shire office. Any queries, comments or complaints are to be directed to the Wongi Volunteer.



Ciara Whitmore  
3316 Robinson Rd  
WOODANILLING WA 6316  
Phone: 9823 1506

### **NEW IDEAS ENCOURAGED!!**

We would love to see new suggestions and ideas for the Wongi. By chance do you know someone with upcoming births, marriages, milestones, new locals to have their birthdays added or ad put into the Wongi. Any comments in passing, interesting activities happening in Woody? Email- [shire@woodanilling.wa.gov.au](mailto:shire@woodanilling.wa.gov.au)

**NEXT WONGI - 03 February 2023**  
**Deadline for Articles - 20 January 2023**

### **Advertising Rates 2021/2022**

The below rates are for an A4 page size and in black & white (per month)

Full page \$66.00  
Half page \$33.00  
1/4 page \$16.50  
Business Card \$8.25

If you would like to advertise your business in the Wongi, please email [woody.wongi2020@gmail.com](mailto:woody.wongi2020@gmail.com)

### **DISCLAIMER**

Due to the Trade Practices Act 1974, this publication accepts no responsibility for the accuracy or reliability of the contributors or advertisers. The publisher reserves the right to refuse matter considered unsuitable.

The opinions expressed are not necessarily those of the Shire of Woodanilling or the Wongi volunteers.